



中国船舶工业集团公司  
CHINA STATE SHIPBUILDING CORPORATION



**江西朝阳机械有限公司**  
JIANGXI CHAOYANG MACHINERY CO., LTD

 中船精神

志存高远 / 时不我待 / 勇于创新 / 敢为人先 / 不畏艰险 / 顽强拼搏



# 目 录

## CONTENTS

壁板系统	WALL PANEL SYSTEM	07-15
天花板系统	CEILING PANEL SYSTEM	16-22
地板系统	FLOOR SYSTEM	24-25
舱室门系统	CABIN DOOR SYSTEM	26-40
卫生单元	WET UNITS	41-51
工程总包	EPCT	52-57



# 工厂简介

江西朝阳机械有限公司(原江西朝阳机械厂)隶属于中国船舶工业集团公司,成立于1972年,于1984年开始转产复合岩棉板耐火舱室系统材料,是我国首家生产船舶与海上平台复合岩棉板耐火舱室系统产品的内装材料专业厂。

公司拥有职工600余人,其中中、高级技术人员近150人。公司技术力量雄厚、管理科学严谨、设备精良,尤以薄板加工见长。主要生产线及设备均系国外进口,目前拥有钢板贴塑生产线和开卷校平、纵切、定尺加工生产线、复合岩棉板成型生产线等加工设备。公司已取得了GB/T19001-2008标准质量体系认证证书。同时也是复合岩棉板耐火舱室系统行标(CB3518)以及国标(GB)的起草单位

公司主要船用产品有复合岩棉板、防火门、整体式卫生单元、模块化舱室单元等。产品具有防火、隔声、隔热、美观、易于组装等优良性能,工厂各项技术指标均符合国际海上人命安全公约(SOLAS)的要求,产品已取得CCS、LR、DNV·GL、RINA、ABS、RS、BV、NK、KR等多国船级社认可以及EC、USCG、MCA认可证书。

公司已为国内外各大船厂建造的四千余艘船舶进行配套和安装服务,并已直接出口美洲、欧洲和东南亚地区,且产品已被广泛应用于医疗、生化、电子等陆用净化工程。质量达到国内、国际同类产品先进水平。

公司位于长江之畔、庐山脚下,交通便利,热忱欢迎国内外朋友光临指导,我们将为您提供优良的产品、满意的服务。

公司的宗旨是:质量第一、信誉第一、用户至上。



# Introduction of CYMP

Jiangxi Chaoyang Machinery co., Ltd. (Jiangxi Chaoyang Machinery Plant) found in 1972 and is one of the branch companies of China State Shipbuilding Corp (CSSC) . It's the first special company that produces Accommodation System products for shipbuilding and offshore platform in China .

In CYMP , there are about 600 employees and 150 of them are technical personnels and it has strong technical force , advanced facilities . CYMP is good at steel sheet producing . Main lines and equipments are introduced from abroad. It has steel sheet coated PVC film line , steel roll-opening , cutting line , panel model lines and roll pressing , computer control bending , welding and spot welding machineries . We have obtained GB/T19001-2008 Quality System Certificate. And we are main drafter of industry standard and national standard to accommodation system fireproof product

The main products are compound rock wool panel , Fireproof door , sanitary unit and model cabin unit etc. They have high quality of fireproof , sound insulation , and they're beautiful , simple to install .They meet with SOLAS. Now the products are approved by many classification society such as CCS、LR、DNV · GL、RINA、ABS、RS、BV、NK、KR and also approved by EC、USCG、MCA.

Our products have been used in over four thousands of ship which some of them exported directly to U.S.A , Europe and Southeast Asia. And they are popular with customers .Our products have used widely in the field of medicine ,biochemistry , electronics etc.

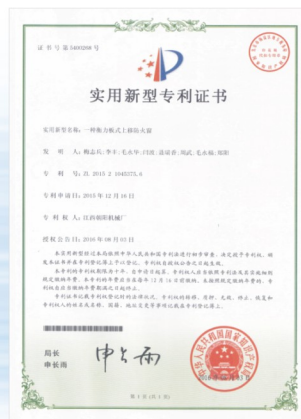
Our company lies near The Yangtze River, at the foot of Lushan Mountain . It has convenient traffic . We warmly welcome friends at home or abroad to CYMP and we'll show you good products and satisfactory service .

The tenet of our company is :

Quality First , Reputation First , Customers Highest !



F型天花板  
Type "F" ceiling



衡力板式防火上移窗  
Cyclostrophic force fireproof upper sliding window



检修门  
Access door



双开检修门  
Double access door



高隔声电缆板  
High sound reduction panel with cable groove



吊道门  
Door with a narrow opening for track



# PANEL APPROVAL LIST

## 世界各地船级社认可表

**中国船级社** CHINA LAMARCA SOCIETY  
**型式认可证书**  
CERTIFICATE OF TYPE APPROVAL

证书编号: 0-11 机壳型  
CLASS NO. 0-11 SH-100

注册商名称: 江苏新航机械  
Jiangsu Xinhang Machinery Plant

注册商地址: 中国江苏省扬州市江都区  
122500 Yangzhou Jiangdu (China)

注册日期: 2017年11月22日

**ABS**  
CERTIFICATE OF DESIGN ASSESSMENT

This is to certify that a representative of the Bureau, as the request of **JIANXI CHAOSHANG MACHINERY PLANT - JIJIANG**

证书编号: 2017-01-001

注册商名称: 江苏新航机械  
Jiangsu Xinhang Machinery Plant

注册商地址: 中国江苏省扬州市江都区  
122500 Yangzhou Jiangdu (China)

注册日期: 2017年11月22日

**KR**  
TYPE APPROVAL CERTIFICATE

Certificate No. (CERTIFICATION) Initial Approval: 11th September, 2017  
Product (Type Protection Device) (PROTECTIVE DEVICE) PL-251  
Manufacturer: No. 911, Longfeng Road, Yangliu County, Jiangsu China

Product Description: Class: M21  
Size: 400 x 400 mm  
No. "Specialty": F

Approved Conditions: No. "Specialty": F

注册商名称: 江苏新航机械  
Jiangsu Xinhang Machinery Plant

注册商地址: 中国江苏省扬州市江都区  
122500 Yangzhou Jiangdu (China)

注册日期: 2017年11月22日

**NIPPON KAIJI KYOKAI**  
Certificate of APPROVAL

Certificate No. 140000010  
Product name: 400x400mm  
Manufacturer: Jiangsu Xinhang Machinery Plant  
122500 Yangzhou Jiangdu (China)

Working condition: 100% IEC Class B Type 1  
Size: 400mm

注册商名称: 江苏新航机械  
Jiangsu Xinhang Machinery Plant

注册商地址: 中国江苏省扬州市江都区  
122500 Yangzhou Jiangdu (China)

注册日期: 2017年11月22日

**R** Lloyd's Register  
CERTIFICATE OF FIRE APPROVAL

This is to certify that the product detailed herein will be provided for compliance with the applicable Lloyd's Register Rules and Regulations and that the product is suitable for use in the specified conditions of service.

注册商名称: 江苏新航机械  
Jiangsu Xinhang Machinery Plant

注册商地址: 中国江苏省扬州市江都区  
122500 Yangzhou Jiangdu (China)

注册日期: 2017年11月22日

**R** Lloyd's Register  
User's Register DATA

This is to certify that the product detailed herein will be provided for compliance with the applicable Lloyd's Register Rules and Regulations and that the product is suitable for use in the specified conditions of service.

注册商名称: 江苏新航机械  
Jiangsu Xinhang Machinery Plant

注册商地址: 中国江苏省扬州市江都区  
122500 Yangzhou Jiangdu (China)

注册日期: 2017年11月22日

**R** Lloyd's Register  
User's Register DATA

This is to certify that the product detailed herein will be provided for compliance with the applicable Lloyd's Register Rules and Regulations and that the product is suitable for use in the specified conditions of service.

注册商名称: 江苏新航机械  
Jiangsu Xinhang Machinery Plant

注册商地址: 中国江苏省扬州市江都区  
122500 Yangzhou Jiangdu (China)

注册日期: 2017年11月22日

**R** Lloyd's Register  
TYPE APPROVAL CERTIFICATE

This is to certify that the product detailed herein will be provided for compliance with the applicable Lloyd's Register Rules and Regulations and that the product is suitable for use in the specified conditions of service.

注册商名称: 江苏新航机械  
Jiangsu Xinhang Machinery Plant

注册商地址: 中国江苏省扬州市江都区  
122500 Yangzhou Jiangdu (China)

注册日期: 2017年11月22日

**DNV-GL**  
TYPE APPROVAL CERTIFICATE

This is to certify that the product detailed herein will be provided for compliance with the applicable DNV-GL Rules and Regulations and that the product is suitable for use in the specified conditions of service.

注册商名称: 江苏新航机械  
Jiangsu Xinhang Machinery Plant

注册商地址: 中国江苏省扬州市江都区  
122500 Yangzhou Jiangdu (China)

注册日期: 2017年11月22日

**DNV-GL**  
EC-TYPE EXAMINATION CERTIFICATE

This is to certify that the product detailed herein will be provided for compliance with the applicable DNV-GL Rules and Regulations and that the product is suitable for use in the specified conditions of service.

注册商名称: 江苏新航机械  
Jiangsu Xinhang Machinery Plant

注册商地址: 中国江苏省扬州市江都区  
122500 Yangzhou Jiangdu (China)

注册日期: 2017年11月22日

**DNV-GL**  
CERTIFICATE OF APPROVAL

This is to certify that the product detailed herein will be provided for compliance with the applicable DNV-GL Rules and Regulations and that the product is suitable for use in the specified conditions of service.

注册商名称: 江苏新航机械  
Jiangsu Xinhang Machinery Plant

注册商地址: 中国江苏省扬州市江都区  
122500 Yangzhou Jiangdu (China)

注册日期: 2017年11月22日

**DNV-GL**  
TYPE APPROVAL CERTIFICATE

This is to certify that the product detailed herein will be provided for compliance with the applicable DNV-GL Rules and Regulations and that the product is suitable for use in the specified conditions of service.

注册商名称: 江苏新航机械  
Jiangsu Xinhang Machinery Plant

注册商地址: 中国江苏省扬州市江都区  
122500 Yangzhou Jiangdu (China)

注册日期: 2017年11月22日

**俄罗斯船级社** RUSSIAN MARINE REGISTER  
CERTIFICATE OF TYPE APPROVAL

注册商名称: 江苏新航机械  
Jiangsu Xinhang Machinery Plant

注册商地址: 中国江苏省扬州市江都区  
122500 Yangzhou Jiangdu (China)

注册日期: 2017年11月22日

**俄罗斯船级社** RUSSIAN MARINE REGISTER  
CERTIFICATE OF TYPE APPROVAL

注册商名称: 江苏新航机械  
Jiangsu Xinhang Machinery Plant

注册商地址: 中国江苏省扬州市江都区  
122500 Yangzhou Jiangdu (China)

注册日期: 2017年11月22日

**俄罗斯船级社** RUSSIAN MARINE REGISTER  
CERTIFICATE OF TYPE APPROVAL

注册商名称: 江苏新航机械  
Jiangsu Xinhang Machinery Plant

注册商地址: 中国江苏省扬州市江都区  
122500 Yangzhou Jiangdu (China)

注册日期: 2017年11月22日

**俄罗斯船级社** RUSSIAN MARINE REGISTER  
CERTIFICATE OF TYPE APPROVAL

注册商名称: 江苏新航机械  
Jiangsu Xinhang Machinery Plant

注册商地址: 中国江苏省扬州市江都区  
122500 Yangzhou Jiangdu (China)

注册日期: 2017年11月22日



# PANEL APPROVAL LIST

## 复合岩棉板认可表

● Approved 被认可的  
○ Applying 在申请的

No.序号	TYPE 型号	Fire Class 防火级别	Product Name 产品名称	EC	LR	DNV.GL	NK	ABS	BV	MCA	CCS	USCG	KR	RINA
1	B50A	B15	Bulkhead Panel 舱壁板	●	●	●	●	●	●	●	●	●	●	●
2	B50C	B15	Bulkhead Panel 舱壁板	○	○	○	●	○	○	○	○	○	○	○
3	B50C-D	B15	Bulkhead Panel 舱壁板	●	●	●	●	●	●	○	●	●	●	●
4	B25C	B0	Lining Panel 衬板	●	●	●	●	●	●	○	●	●	●	●
5	WB30C	B15	Bulkhead Panel With Hole 冲孔舱壁板	○	○	○	○	○	○	○	●	○	○	○
6	WB25A	B15	Bulkhead Panel With Hole 冲孔舱壁板	●	●	●	●	●	●	○	●	●	●	●
7	B50A-G	B15	High sound proof Bulkhead Panel 高隔声舱壁板	●	○	○	●	○	○	○	●	●	○	○
8	B50C-G	B15	High sound proof Bulkhead Panel 高隔声舱壁板	●	○	○	○	●	○	○	●	●	○	○
9	B50A-DG	B15	High sound proof Bulkhead Panel 高隔声舱壁板	●	○	○	○	○	○	○	●	○	○	○
10	B100	A60	Bulkhead Panel 舱壁板	●	○	○	○	○	○	○	●	●	○	○
11	B25CLFW	B0	Al Honeycomb ceiling 铝蜂窝舱壁板	●	○	●	○	●	○	○	●	●	○	○
12	B50CLFW	B0	Al Honeycomb ceiling 铝蜂窝舱壁板	○	○	●	○	●	○	○	●	○	○	○
13	B25ALFW	B0	Al Honeycomb ceiling 铝蜂窝舱壁板	○	○	○	○	○	○	○	●	○	○	○
14	B25E	B0	Lining Panel 衬板	○	○	○	○	○	○	○	●	○	○	○
15	B50E	B15	Bulkhead Panel 舱壁板	○	○	○	○	○	○	○	●	○	○	○
16	T25A	B0	Ceiling Panel 天花板	○	○	○	○	●	○	○	○	○	○	○
17	WT25A	B15	Ceiling Panel 天花板	●	●	○	●	●	●	○	●	●	●	●
18	T25D	B0	Ceiling Panel 带模拟灯具、布风口、维修窗的悬挂式天花板	○	○	○	○	●	○	○	●	○	○	○
19	WT25D	B0	Hanging Ceiling With Hole 冲孔悬挂式天花板	○	○	●	○	○	○	○	○	○	○	○
20	T50F	B15	Square Ceiling Panel 方型天花板	●	○	○	○	●	○	○	●	●	○	○
21	T25F	B15	Square Ceiling Panel 方型天花板	○	○	○	○	○	○	○	●	○	○	○
22	WT50Z	B15	Ceiling 天花板	●	○	○	○	○	○	○	●	○	○	○
23	T25ALFW	B0	Al Honeycomb bulkhead Panel 铝蜂窝天花板	○	○	●	○	●	○	○	●	○	○	○
24	FD60	A60	Floating Floor 浮动地板	●	○	●	○	●	○	○	●	●	○	○



# DOOR APPROVAL LIST

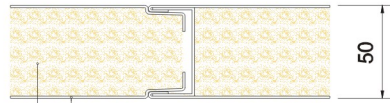
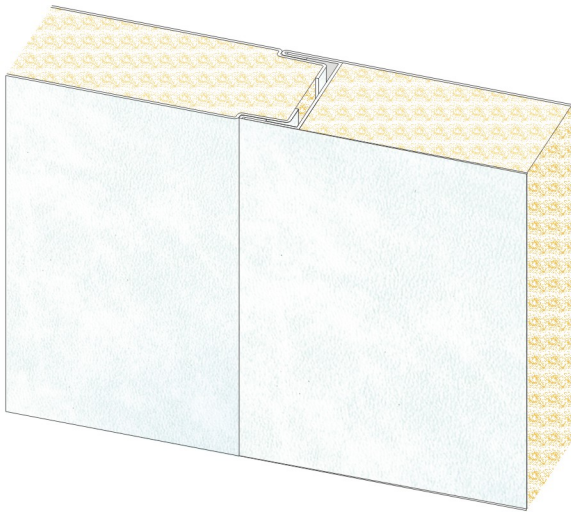
## 防火门认可表

● Approved 被认可的  
○ Applying 在申请的

No.序号	TYPE型号	Fire Class 防火级别	Product Name 产品名称	EC	LR	DNV.GL	NK	ABS	BV	MCA	CCS	USCG	KR	RINA	RS
1	MA60TT	A60	A60 Class Single Leaf Fire Door A60 防火门	●	○	●	○	●	○	○	●	●	○	●	○
2	MA60PX	A60	A60 Class Single Leaf Fire Door With Fire Window A60 带窗单开防火门	●	○	○	○	○	○	○	●	○	●	○	●
3	MA15TX	A15	A15 Class Single Leaf Fire Door With Window And Escape A15 带窗带逃生口单开防火门	●	○	●	○	○	○	○	●	●	○	●	●
4	MA15WX	A15	A15 Class Single Leaf Fire Door A15 带窗带逃生口带消防火门无槛防火门	○	○	○	○	○	○	○	●	○	○	○	○
5	MA60WS	A60	A60 Class Double Leaf Fire Door With Window And Host Port A60 带窗带消防火门双开防火门	○	○	○	○	○	○	○	●	○	○	○	●
6	SMB15A-C	B15	B15 Class Double Leaf Fire Door With Window And Escape B15 带窗带逃生口双开防火门	●	○	●	○	●	○	●	●	●	○	○	○
7	MB15	B15	B15 Class Single Leaf Fire Door With Window And Escape B15 带窗带逃生口单开防火门	●	●	●	●	●	○	○	●	●	●	●	●
8	MB15XF	B15	Fire Cabin Door With Air Duct 风道式通风栅防火门	●	○	○	○	○	○	○	●	●	○	○	○
9	YMA15	A15	A15 Class double leaf Sliding Door A15 移门	●	○	○	○	○	○	○	●	●	○	○	○
10	SYMA15	A15	A15 Class double leaf Sliding Door A15 双开移门	○	○	○	○	○	○	○	●	○	○	○	○
11	YMA60	A60	A60 Class double leaf Sliding Door A60 移门	○	○	○	○	○	○	○	●	○	○	○	○
12	SYMA60	A60	A60 Class double leaf Sliding Door A60 双开移门	○	○	○	○	○	○	○	●	○	○	○	○
13	QMA60	A60	A60 Class Gastight Double Leaf Fire Door A60 气密防火门	○	○	●	○	●	○	○	●	○	○	●	○
14	QSMA60	A60	A60 Class Gastight Double Leaf Fire Door A60 双开气密防火门	●	○	○	○	●	○	○	●	●	○	○	○
15	MH120	H	H120 Class Single Leaf Fire Door H120 防火门	●	○	●	○	○	○	○	●	●	○	○	○
16	JLMA0	A0	A0 Class Roller shutter A0 级防火卷帘门	●	○	○	○	●	○	○	●	●	○	○	○
17	SJXMB15	B15	B15 Double Leaf Access Door B15 双开检修门	○	○	○	○	○	○	○	●	○	○	○	○
18	LJXMB15	B15	Access door 检修门	●	○	○	○	○	○	○	●	○	○	○	○
19	TCB15	B15	B15 Class Maintenance Skylight of the Ceiling B15 级天花板维修天窗	○	○	○	○	○	○	○	●	○	○	○	○
20	CA60	A60	A60 Class Fire Rectangular Window A60 防火窗	○	○	○	○	○	○	○	●	○	○	○	○
21	KCA60	A60	A60 Class Opening Rectangular Port hole A60 级开启式矩形窗	○	○	○	○	○	○	○	●	○	○	○	○
22	NMB15	B15	B15 Class Fire Cabin Door B15 舱室门	○	○	○	●	●	○	○	○	○	○	●	○



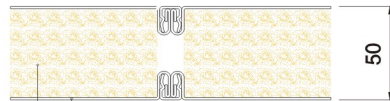
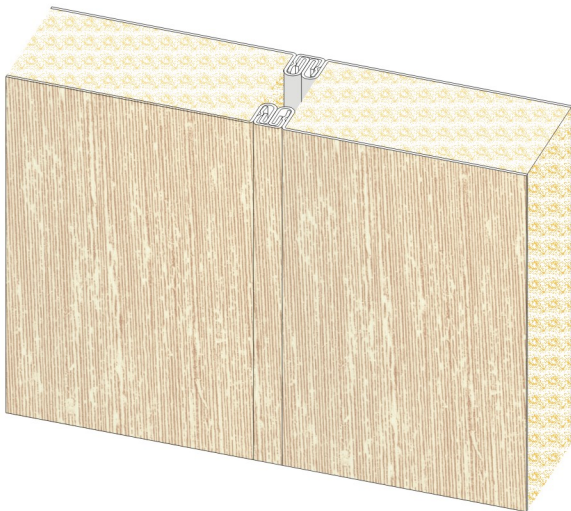
TYPE  
型号 B50A



0.6mm Thickness of steel sheet finished with PVC film or galvanized  
0.6mm 厚的贴塑钢板或镀锌钢板

Rock wool of density 150kg/m<sup>3</sup>  
岩棉 150kg/m<sup>3</sup>

TYPE  
型号 B50C

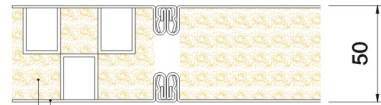
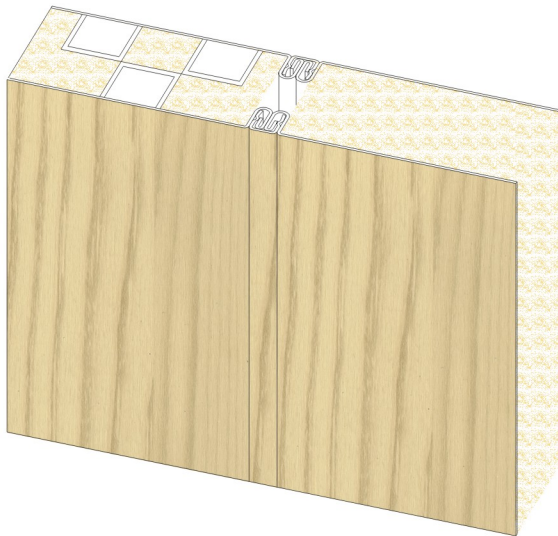


0.6mm Thickness of steel sheet finished with PVC film or galvanized  
0.6mm 厚的贴塑钢板或镀锌钢板

Rock wool of density 150kg/m<sup>3</sup>  
岩棉 150kg/m<sup>3</sup>

Type	型号	B50A	B50C
Fire class	防火级别	B-15	B-15
Weight	重量	16.4 kg/m <sup>2</sup>	16.8 kg/m <sup>2</sup>
Sound reduction	隔声量	37 dB(A)	38 dB(A)
Surface finish	面材	PVC film or galvanized	贴 PVC 或镀锌
Dimension	尺寸	550mm × Height (Max. 3000mm) 标准宽度 550mm × 高度可选 (最高 3000mm)	
Tolerances	公差	Width $0_{-1}$ Height $0_{-3}$ Thickness $0_{-1}$	宽度 $0_{-1}$ 高度 $0_{-3}$ 厚度 $0_{-1}$

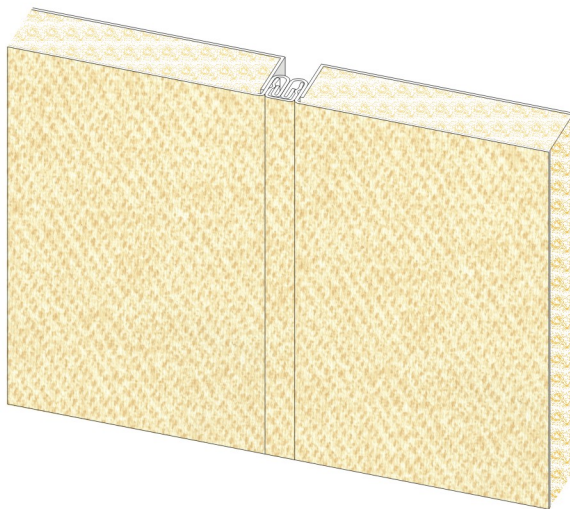
TYPE  
型号 B50C-D



0.6mm Thickness of steel sheet finished with PVC film or galvanized  
0.6mm 厚的贴塑钢板或镀锌钢板

Rock wool of density 150kg/m<sup>3</sup>  
岩棉 150kg/m<sup>3</sup>

TYPE  
型号 B25C

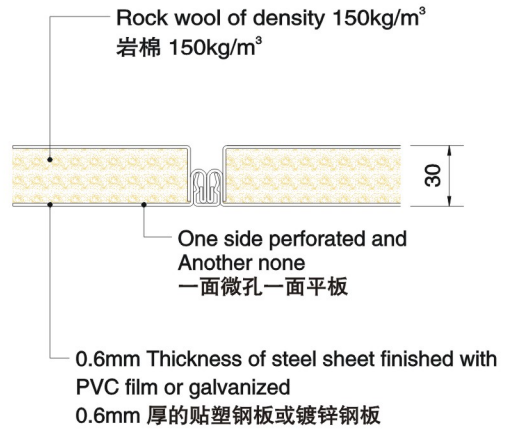
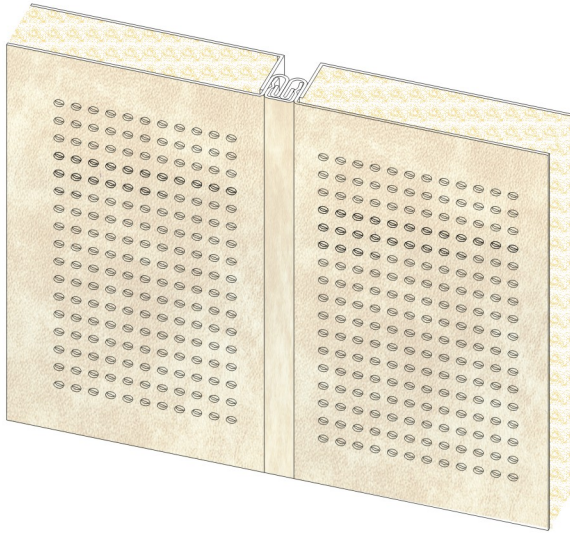


0.6mm Thickness of steel sheet finished with PVC film or galvanized  
0.6mm 厚的贴塑钢板或镀锌钢板

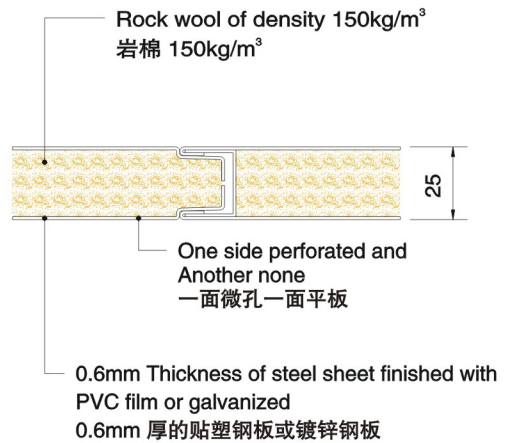
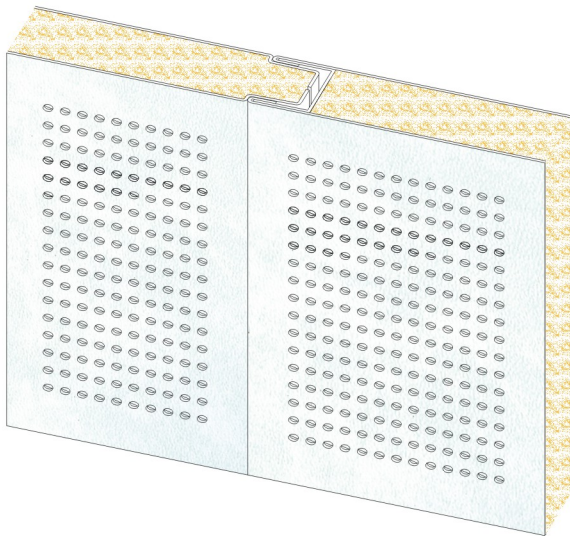
Rock wool of density 150kg/m<sup>3</sup>  
岩棉 150kg/m<sup>3</sup>

Type	型号	B50C-D	B25C
Fire class	防火级别	B-15	B-15
Weight	重量	16.0 kg/m <sup>2</sup>	13.8 kg/m <sup>2</sup>
Sound reduction	隔声量	38 dB(A)	37 dB(A)
Surface finish	面材	PVC film or galvanized 贴 PVC 或镀锌	
Dimension	尺寸	550mm × Height (Max. 3000mm) 标准宽度 550mm × 高度可选 (最高 3000mm)	
Tolerances	公差	Width $0_{-1}$ Height $0_{-3}$ Thickness $0_{-1}$	宽度 $0_{-1}$ 高度 $0_{-3}$ 厚度 $0_{-1}$

TYPE  
型号 WB30C

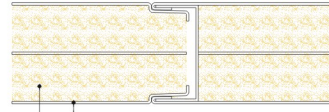
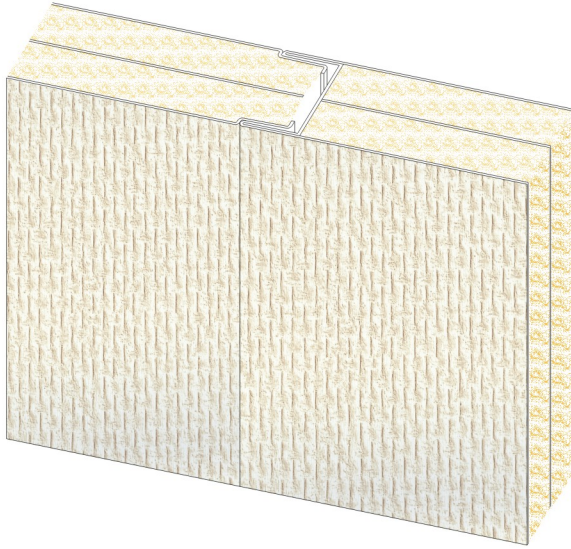


TYPE  
型号 WB25A



Type	型号	WB30C	WB25A
Fire class	防火级别	B-15	B-15
Weight	重量	14.0 kg/m <sup>2</sup>	13.2 kg/m <sup>2</sup>
Sound reduction	隔声量	37 dB(A)	36 dB(A)
Surface finish	面材	PVC film or galvanized 贴 PVC 或镀锌	
Dimension	尺寸	550mm × Height (Max. 3000mm) 标准宽度 550mm × 高度可选 (最高 3000mm )	
Tolerances	公差	Width $0_{-1}$ Height $0_{-3}$ Thickness $0_{-1}$	宽度 $0_{-1}$ 高度 $0_{-3}$ 厚度 $0_{-1}$

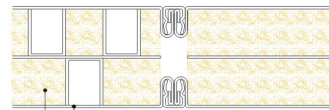
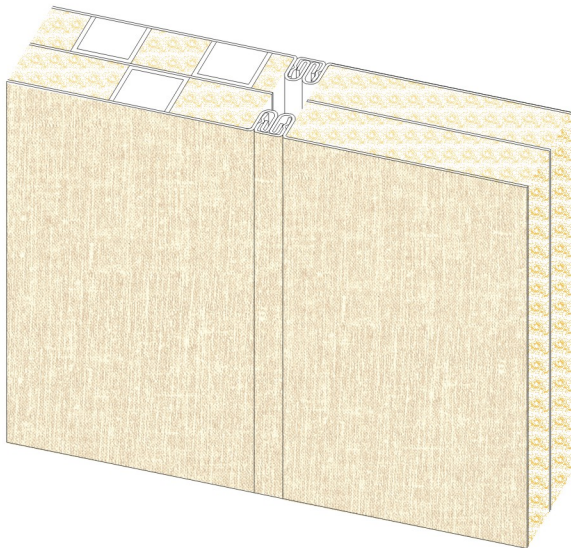
TYPE  
型号 B50A-G



0.6mm Thickness of steel sheet finished with PVC film or galvanized  
0.6mm 厚的贴塑钢板或镀锌钢板

Rock wool of density 150kg/m<sup>3</sup>  
岩棉 150kg/m<sup>3</sup>

TYPE  
型号 B50C-G

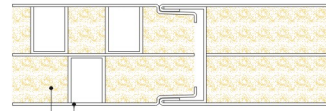
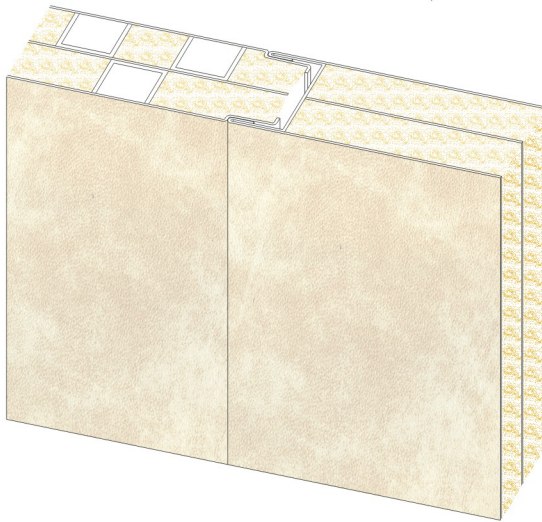


0.6mm Thickness of steel sheet finished with PVC film or galvanized  
0.6mm 厚的贴塑钢板或镀锌钢板

Rock wool of density 150kg/m<sup>3</sup>  
岩棉 150kg/m<sup>3</sup>

Type	型号	B50A-G	B50C-G
Fire class	防火级别	B-15	B-15
Weight	重量	21.0 kg/m <sup>2</sup>	21.2 kg/m <sup>2</sup>
Sound reduction	隔声量	46 dB(A)	46 dB(A)
Surface finish	面材	PVC film or galvanized	贴 PVC 或镀锌
Dimension	尺寸	550mm × Height (Max. 3000mm) 标准宽度 550mm × 高度可选 (最高 3000mm )	
Tolerances	公差	Width $0_{-1}$ Height $0_{-3}$ Thickness $0_{-1}$	宽度 $0_{-1}$ 高度 $0_{-3}$ 厚度 $0_{-1}$

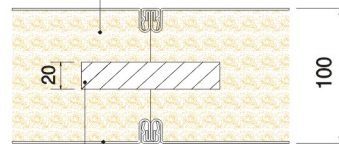
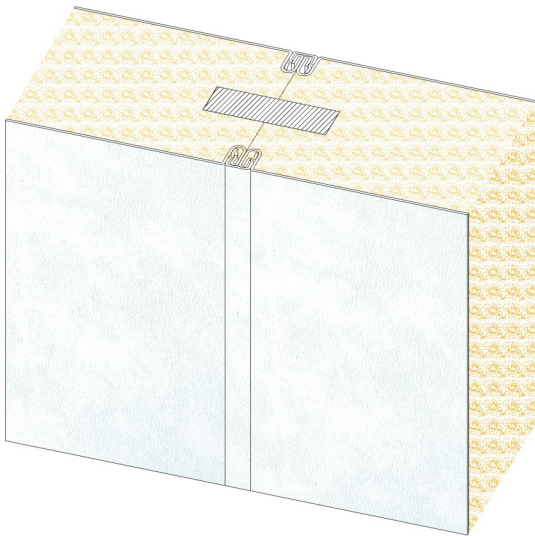
TYPE  
型号 B50A-DG



0.6mm Thickness of steel sheet finished with PVC film or galvanized  
0.6mm 厚的贴塑钢板或镀锌钢板

Rock wool of density 150kg/m<sup>3</sup>  
岩棉 150kg/m<sup>3</sup>

TYPE  
型号 B100



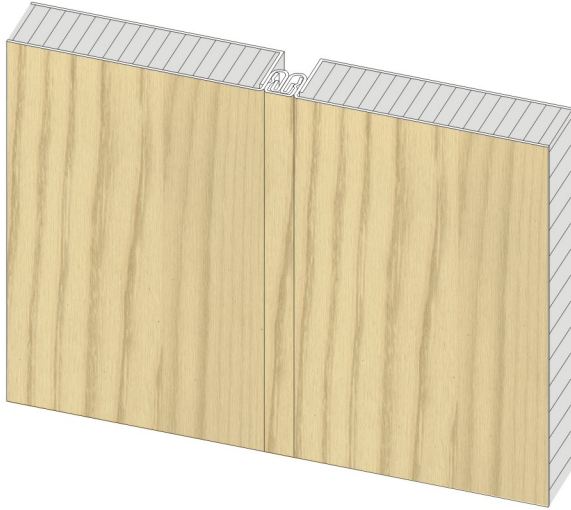
Class A60 Rock wool of density 100kg/m<sup>3</sup>  
A60 级岩棉 100kg/m<sup>3</sup>

0.6mm Thickness of steel sheet finished with PVC film or galvanized  
0.6mm 厚的贴塑钢板或镀锌钢板

20mm Thickness of Inorganic Magnesium Oxide Plate  
20mm 厚的氧化镁板

Type	型号	B50A-DG	B100
Fire class	防火级别	B-15	A-60
Weight	重量	21.1 kg/m <sup>2</sup>	22.7 kg/m <sup>2</sup>
Sound reduction	隔声量	46 dB(A)	—
Surface finish	面材	PVC film or galvanized	贴 PVC 或镀锌
Dimension	尺寸	550mm × Height (Max. 3000mm)	标准宽度 550mm × 高度可选 (最高 3000mm)
Tolerances	公差	Width $0_{-1}$ Height $0_{-3}$ Thickness $0_{-1}$	宽度 $0_{-1}$ 高度 $0_{-3}$ 厚度 $0_{-1}$

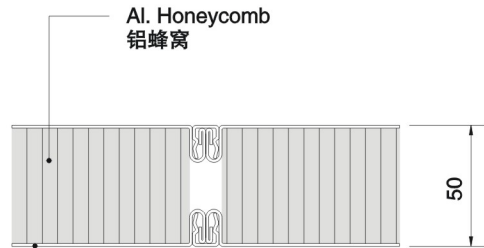
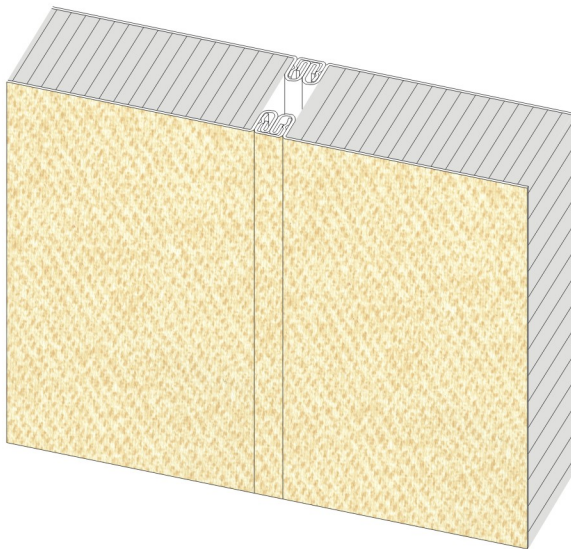
TYPE  
型号 B25CLFW



0.6mm Thickness of steel sheet finished with PVC film or galvanized  
0.6mm 厚的贴塑钢板或镀锌钢板

Al Honeycomb  
铝蜂窝

TYPE  
型号 B50CLFW

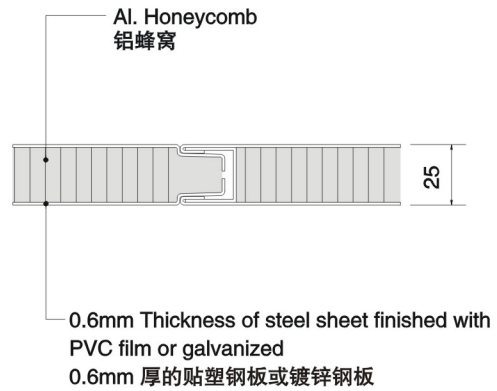
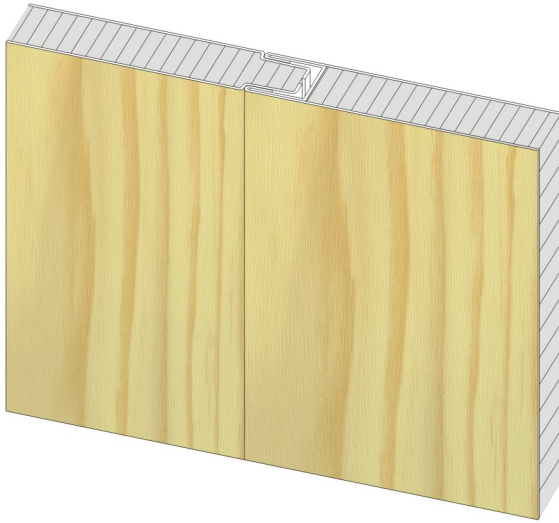


Al. Honeycomb  
铝蜂窝

0.6mm Thickness of steel sheet finished with PVC film or galvanized  
0.6mm 厚的贴塑钢板或镀锌钢板

Type	型号	B25CLFW	B50CLFW
Fire class	防火级别	B-0	B-0
Weight	重量	9.9 kg/m <sup>2</sup>	12.4 kg/m <sup>2</sup>
Sound reduction	隔声量	—	—
Surface finish	面材	PVC film or galvanized	贴 PVC 或镀锌
Dimension	尺寸	550mm × Height (Max. 3000mm) 标准宽度 550mm × 高度可选 (最高 3000mm)	
Tolerances	公差	Width $0_{-1}$ Height $0_{-3}$ Thickness $0_{-1}$	宽度 $0_{-1}$ 高度 $0_{-3}$ 厚度 $0_{-1}$

TYPE  
型号 B25ALFW

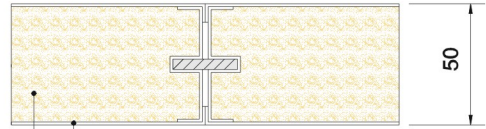
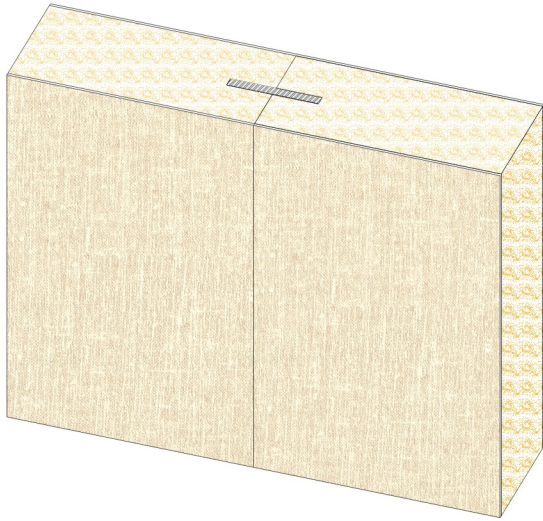


TYPE  
型号 B25E



Type	型号	B25ALFW	B25E
Fire class	防火级别	B-0	B-0
Weight	重量	9.8 kg/m <sup>2</sup>	14.1 kg/m <sup>2</sup>
Sound reduction	隔声量	/	/
Surface finish	面材	PVC film or galvanized	贴 PVC 或镀锌
Dimension	尺寸	550mm × Height (Max. 3000mm) 标准宽度 550mm × 高度可选 (最高 3000mm)	
Tolerances	公差	Width $0_{-1}$ Height $0_{-3}$ Thickness $0_{-1}$	宽度 $0_{-1}$ 高度 $0_{-3}$ 厚度 $0_{-1}$

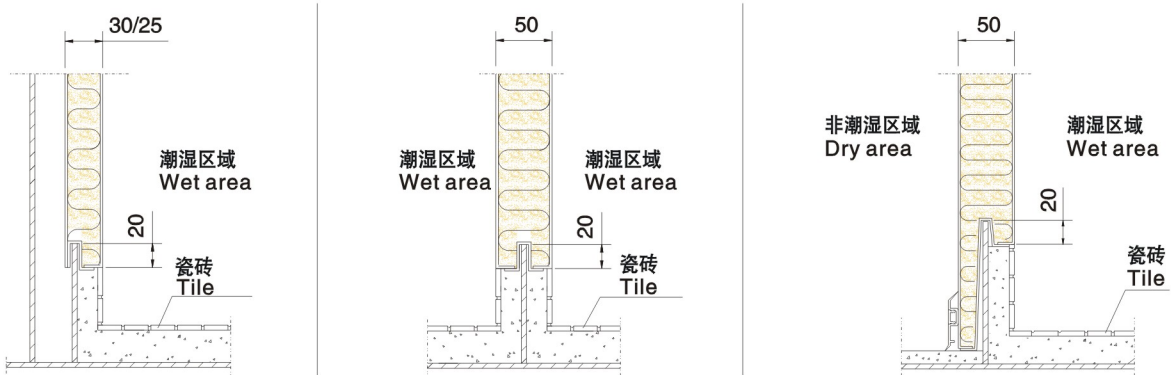
TYPE  
型号 B50E



0.6mm Thickness of steel sheet finished with PVC film or galvanized  
0.6mm 厚的贴塑钢板或镀锌钢板

Rock wool of density 150kg/m<sup>3</sup>  
岩棉 150kg/m<sup>3</sup>

INSTALLATION SKETCH OF WALL PANEL IN MOIST AREA  
潮湿区域板安装节点示意图



Type	型号	B50E				
Fire class	防火级别	B-15				
Weight	重量	17.2 kg/m <sup>2</sup>				
Sound reduction	隔声量	/				
Surface finish	面材	PVC film or galvanized		贴 PVC 或镀锌		
Dimension	尺寸	550mm × Height (Max. 3000mm) 标准宽度 550mm × 高度可选 (最高 3000mm)				
Tolerances	公差	Width $_{-1}^0$	Height $_{-3}^0$	Thickness $_{-1}^0$	宽度 $_{-1}^0$	高度 $_{-3}^0$ 厚度 $_{-1}^0$



LIST OF WALL PROFILE

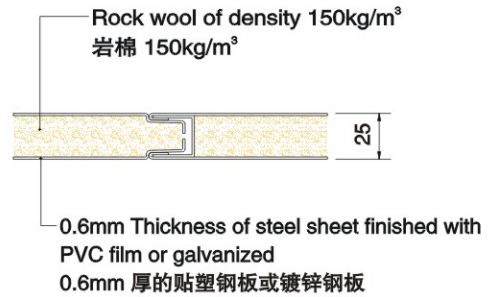
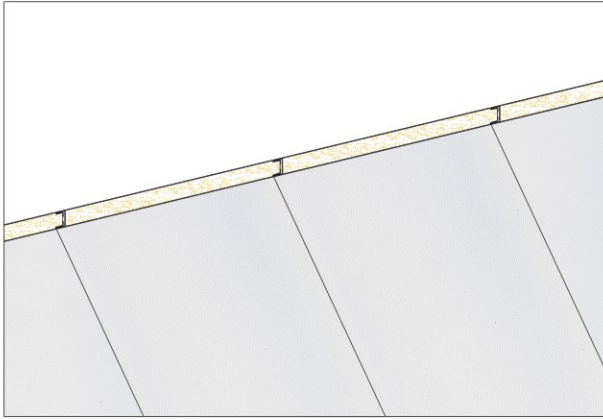
型材表

t --- Thickness of steel sheet 钢板厚度  
L --- Length 长度

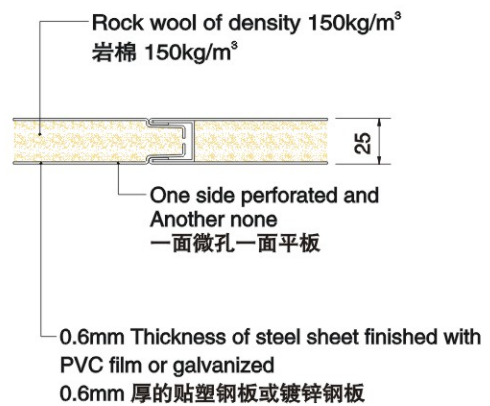
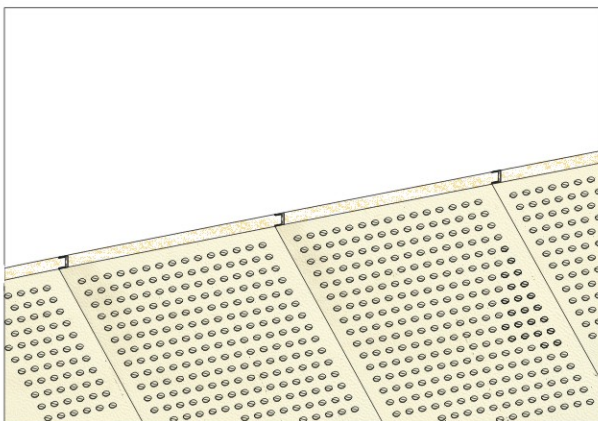
NO. 编号	NAME 名称	SHAPE 形状	DIMENSION 尺寸	USE FOR 用途	NO. 编号	NAME 名称	SHAPE 形状	DIMENSION 尺寸	USE FOR 用途
171	Bottom profile 底型材		t=1.0 mm L=3000 mm 0.82 kg/m Galvanized 镀锌	50 mm Thickness Bulkhead panel 50mm 厚的壁板	147	External Corner angle 外包角 A		t=0.6 mm L=3000mm(Max) 1.24 kg/m PVC 贴塑	External corner for 50 mm Thickness Bulkhead panel 50mm厚的壁板外角
171	Bottom profile 底型材		t=1.0 mm L=3000 mm 0.63 kg/m Galvanized 镀锌	30 mm Thickness Lining panel 30mm 厚的衬板	147	External Corner angle 外包角 A		t=0.6 mm L=3000mm(Max) 0.96 kg/m PVC 贴塑	External corner for 30 mm Thickness Lining panel 30mm厚的衬板外角
171	Bottom profile 底型材		t=1.0 mm L=3000 mm 0.58 kg/m Galvanized 镀锌	25 mm Thickness Lining panel 25mm 厚的衬板	147	External Corner angle 外包角 A		t=0.6 mm L=3000mm(Max) 0.88 kg/m PVC 贴塑	External corner for 25 mm Thickness Lining panel 25mm厚的衬板外角
178	Bottom profile L 型底型材		t=1.0 mm L=3000 mm 0.72 kg/m Galvanized 镀锌	50 mm Thickness Bulkhead panel 50mm 厚的壁板	149	External Corner angle 外包角 C		t=0.6 mm L=3000mm(Max) 0.80 kg/m PVC 贴塑	External corner for Wall panel 壁板外角
178	Bottom profile L 型底型材		t=1.0 mm L=4000 mm 0.53 kg/m Galvanized 镀锌	30 mm Thickness Lining panel 30mm 厚的衬板	150	External Corner angle 外包角 D		t=0.6 mm L=3000mm(Max) 0.94 kg/m PVC 贴塑	External corner for 50 mm Thickness Bulkhead panel 50mm厚的壁板外角
178	Bottom profile L 型底型材		t=1.0 mm L=3000 mm 0.48 kg/m Galvanized 镀锌	25 mm Thickness Lining panel 25mm 厚的衬板	150	External Corner angle 外包角 D		t=0.6 mm L=3000mm(Max) 0.75 kg/m PVC 贴塑	External corner for 30 mm Thickness Lining panel 30mm厚的衬板外角
477	Bottom profile 双槽底型材		t=1.0 mm L=3000 mm 2.02 kg/m Galvanized 镀锌	Sound panel B70SA,B70SC 隔声板 B70SA,B70SC	150	External Corner angle 外包角 D		t=0.6 mm L=3000mm(Max) 0.71 kg/m PVC 贴塑	External corner for 25 mm Thickness Lining panel 25mm厚的衬板外角
141	Strong profile 加强件		t=0.6 mm L=4000 mm Galvanized 镀锌	Panel be cut 切割加强	151	Cover 包柱型材		t=0.6 mm L=3000mm(Max) PVC 贴塑	Cover 覆盖
187	Steel pad 垫铁		T=1.5 mm	Bottom profile 底型材	152	Cover 一字覆盖材		t=0.6 mm L=3000mm(Max) PVC 贴塑	Cover 覆盖
142	End profile U 型包边		t=0.6 mm L=3000mm(Max) 0.56 kg/m PVC 贴塑	50 mm Thickness Bulkhead panel 50mm 厚的壁板	153	N Joint part N 适配件		t=0.6 mm L=3000mm(Max) 1.21 kg/m PVC 贴塑	50 mm Thickness Bulkhead panel 50mm厚的壁板
142	End profile U 型包边		t=0.6 mm L=3000mm(Max) 0.47 kg/m PVC 贴塑	30 mm Thickness Lining panel 30mm 厚的衬板	153	N Joint part N 适配件		t=0.6 mm L=3000mm(Max) 0.81 kg/m PVC 贴塑	30 mm Thickness Lining panel 30mm 厚的衬板
142	End profile U 型包边		t=0.6 mm L=3000mm(Max) 0.45 kg/m PVC 贴塑	25 mm Thickness Lining panel 25mm 厚的衬板	156	K Joint part K 适配件		t=0.6 mm L=3000mm(Max) 1.30 kg/m PVC 贴塑	50 mm Thickness Bulkhead panel 50mm 厚的壁板
143	End profile U 型包边		t=0.6 mm L=3000mm(Max) 0.56 kg/m PVC 贴塑	50 mm Thickness Bulkhead panel 50mm 厚的壁板	156	K Joint part K 适配件		t=0.6 mm L=3000mm(Max) 1.00 kg/m PVC 贴塑	30 mm Thickness Lining panel 30mm 厚的衬板
143	End profile U 型包边		t=0.6 mm L=3000mm(Max) 0.47 kg/m PVC 贴塑	30 mm Thickness Lining panel 30mm 厚的衬板	157	L Joint part L 适配件		t=0.6 mm L=3000mm(Max) 0.97 kg/m PVC 贴塑	50 mm Thickness Bulkhead panel 30 mm Thickness Lining panel 50mm 厚的壁板 30mm 厚的衬板
143	End profile U 型包边		t=0.6 mm L=3000mm(Max) 0.45 kg/m PVC 贴塑	25 mm Thickness Lining panel 25mm 厚的衬板	484	L Corner Cover L 型包角		t=0.6 mm L=3000mm(Max) 1.34 kg/m 1.16 kg/m PVC 贴塑	50 mm Thickness Bulkhead panel 30 mm Thickness Lining panel 50mm 厚的壁板 30mm 厚的衬板
144	Internal Corner angle 内包角 A		t=0.6 mm L=3000mm(Max) 0.51 kg/m PVC 贴塑	Internal corner for wall panel 壁板内角	176	H Profile H 型材		t=0.6 mm L=3000mm(Max) 1.74 kg/m PVC 贴塑	50 mm Thickness Bulkhead panel 50mm 厚的壁板
145	Internal Corner angle 内包角 B		t=0.6 mm L=3000mm(Max) 0.82 kg/m PVC 贴塑	Internal corner for 50 mm Thickness Bulkhead panel 50mm 厚的壁板内角	176	H Profile H 型材		t=0.6 mm L=3000mm(Max) 1.54 kg/m PVC 贴塑	30 mm Thickness Lining panel 30mm 厚的衬板
145	Internal Corner angle 内包角 B		t=0.6 mm L=3000mm(Max) 0.73 kg/m PVC 贴塑	Internal corner for 30 mm Thickness Lining panel 30mm厚的衬板内角					
145	Internal Corner angle 内包角 B		t=0.6 mm L=3000mm(Max) 0.70 kg/m PVC 贴塑	Internal corner for 25 mm Thickness Lining panel 25mm 厚的衬板内角					
146	Internal Corner angle 内包角 C		t=0.6 mm L=3000mm(Max) 0.33 kg/m PVC 贴塑	Internal corner for wall panel 壁板内角					

# ● CEILING PANEL SYSTEM 天花板系统

TYPE  
型号 T25A



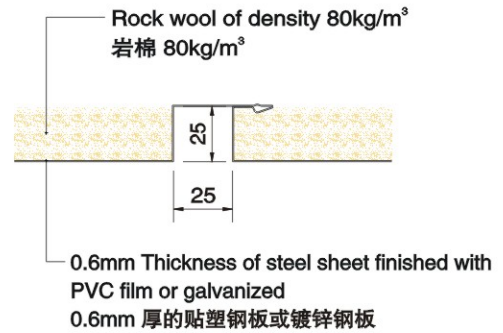
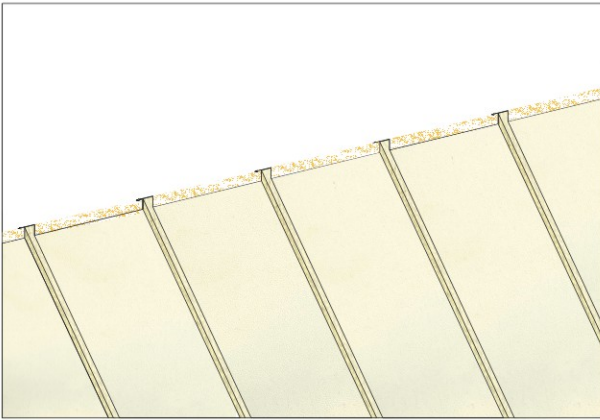
TYPE  
型号 WT25A



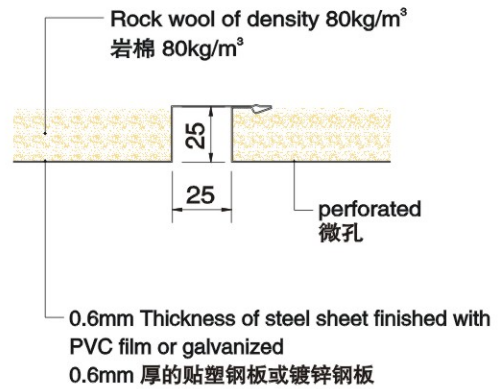
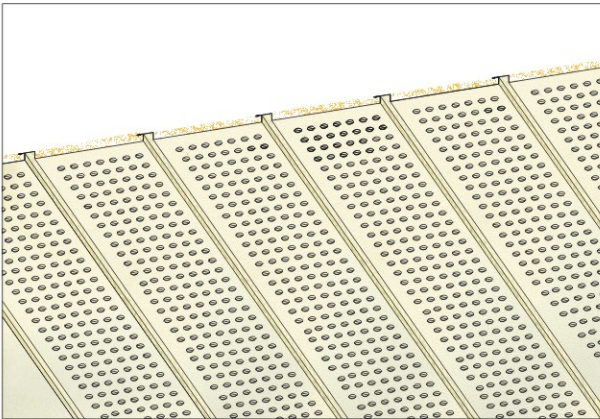
Type	型号	T25A	WT25A
Fire class	防火级别	B-0	B-15
Weight	重量	13.3 kg/m <sup>2</sup>	12.8 kg/m <sup>2</sup>
Sound reduction	隔声量	36 dB(A)	36 dB(A)
Surface finish	面材	PVC film or galvanized	贴 PVC 或镀锌
Dimension	尺寸	550mm × Height (Max. 3000mm) 标准宽度 550mm × 高度可选 (最高 3000mm)	
Tolerances	公差	Width $0_{-1}$ Height $0_{-3}$ Thickness $0_{-1}$	宽度 $0_{-1}$ 高度 $0_{-3}$ 厚度 $0_{-1}$

# ● CEILING PANEL SYSTEM 天花板系统

TYPE  
型号 T25D



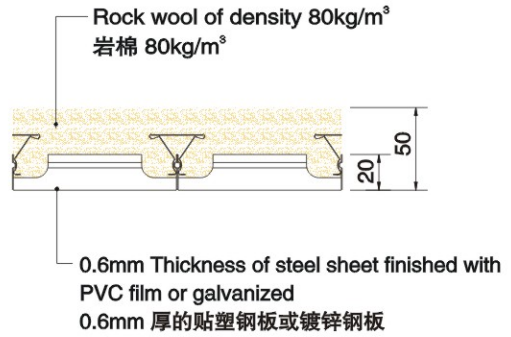
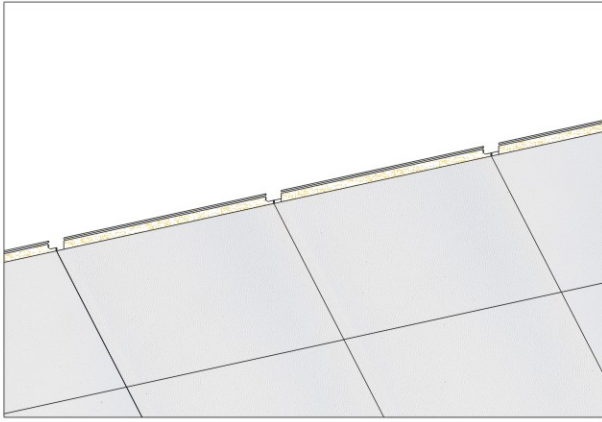
TYPE  
型号 WT25D



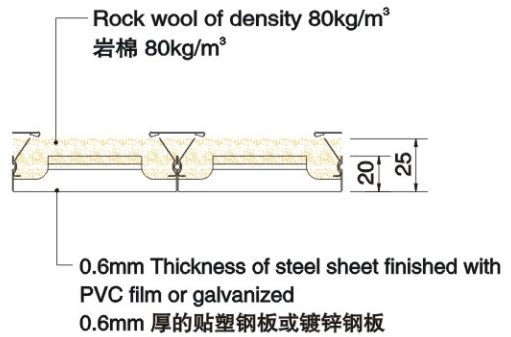
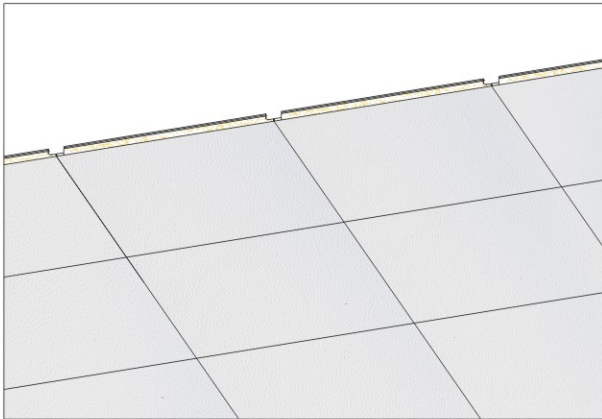
Type	型号	T25D	WT25D
Fire class	防火级别	B-0	B-0
Weight	重量	7.6 kg/m <sup>2</sup>	7.4 kg/m <sup>2</sup>
Sound reduction	隔声量	52 dB(A)	52 dB(A)
Surface finish	面材	PVC film or galvanized	贴 PVC 或镀锌
Dimension	尺寸	550mm × Height (Max. 3000mm) 标准宽度 550mm × 高度可选 (最高 3000mm)	
Tolerances	公差	Width $0_{-1}$ Height $0_{-3}$ Thickness $0_{-1}$	宽度 $0_{-1}$ 高度 $0_{-3}$ 厚度 $0_{-1}$

# ● CEILING PANEL SYSTEM 天花板系统

TYPE  
型号 T50F



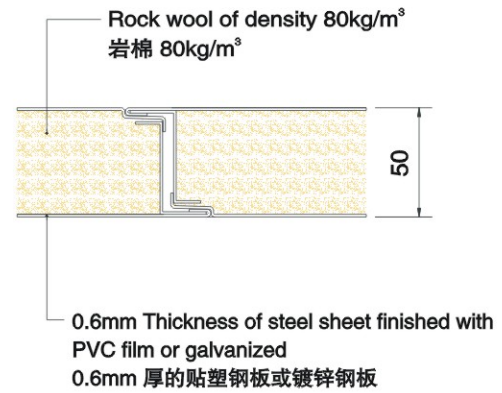
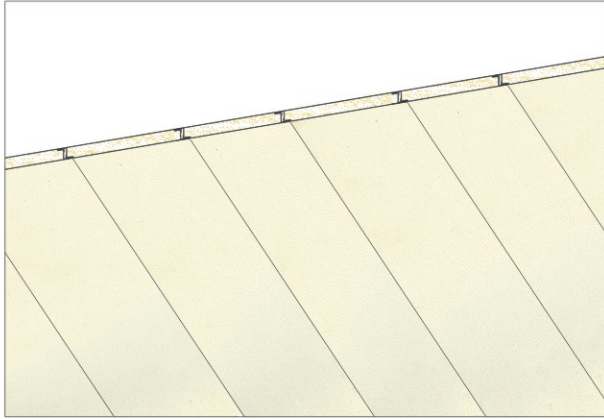
TYPE  
型号 T25F



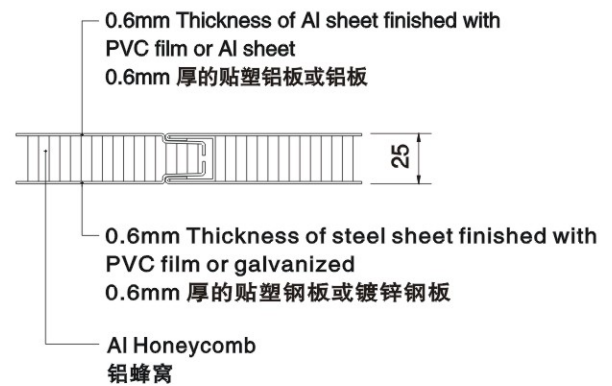
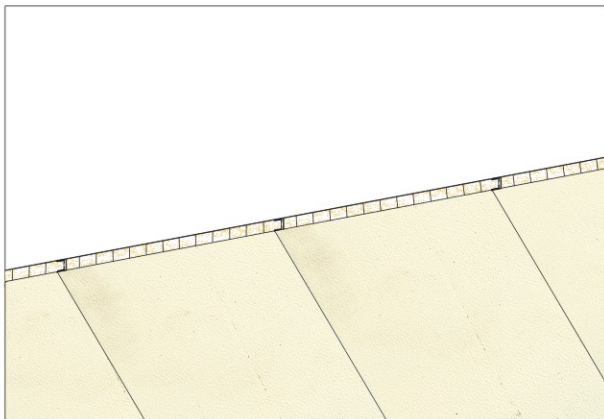
Type	型号	T50F	T25F
Fire class	防火级别	B-15	B-15
Weight	重量	8.8 kg/m <sup>2</sup>	6.8 kg/m <sup>2</sup>
Sound reduction	隔声量	—	—
Surface finish	面材	PVC film or galvanized 贴 PVC 或镀锌	
Dimension	尺寸	550mm × Height (Max. 3000mm) 标准宽度 550mm × 高度可选 (最高 3000mm)	
Tolerances	公差	Width $_{-1}^0$ Height $_{-3}^0$ Thickness $_{-1}^0$	宽度 $_{-1}^0$ 高度 $_{-3}^0$ 厚度 $_{-1}^0$

# ● CEILING PANEL SYSTEM 天花板系统

TYPE  
型号 WT50Z



TYPE  
型号 T25ALFW

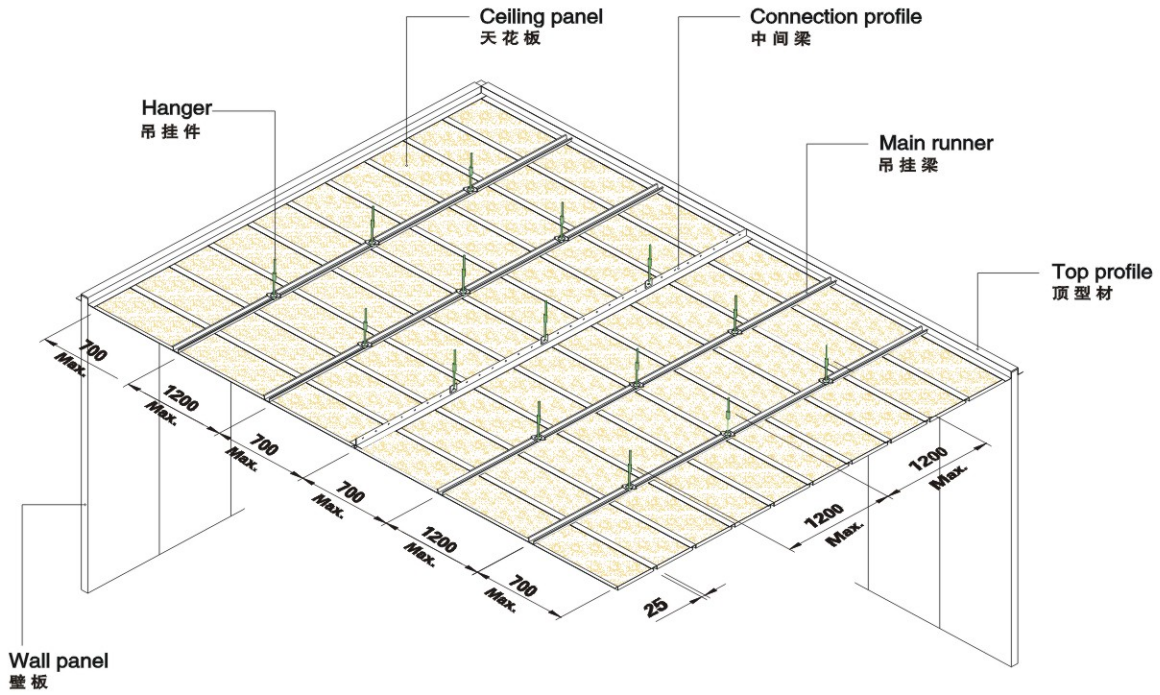


Type	型号	WT50Z	T25ALFW
Fire class	防火级别	B-15	B-0
Weight	重量	16.4 kg/m <sup>2</sup>	10.8 kg/m <sup>2</sup>
Sound reduction	隔声量	—	—
Surface finish	面材	PVC film or galvanized	贴 PVC 或镀锌
Dimension	尺寸	550mm × Height (Max. 3000mm) 标准宽度 550mm × 高度可选 (最高 3000mm)	
Tolerances	公差	Width $_{-1}^0$ Height $_{-3}^0$ Thickness $_{-1}^0$	宽度 $_{-1}^0$ 高度 $_{-3}^0$ 厚度 $_{-1}^0$

# ● CEILING PANEL SYSTEM 天花板系统

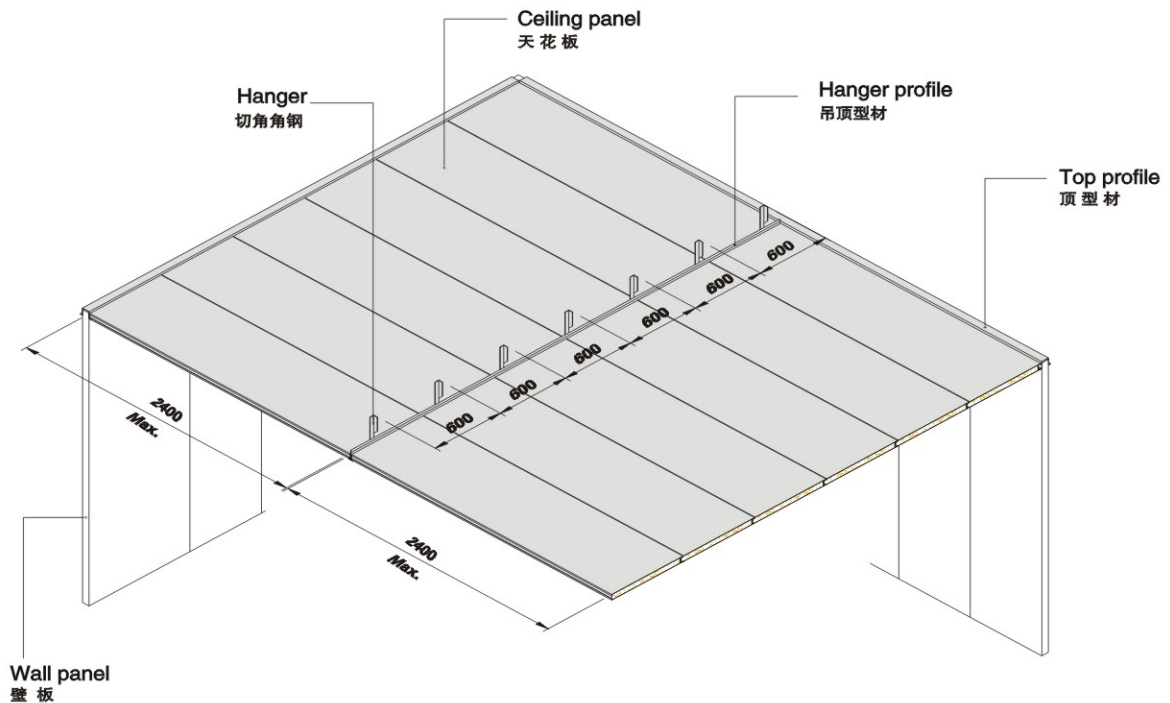
## INSTALLATION DRAWING OF TYPE D CEILING SYSTEM

### D 型天花板的安装示意图



## INSTALLATION DRAWING OF CEILING SYSTEM

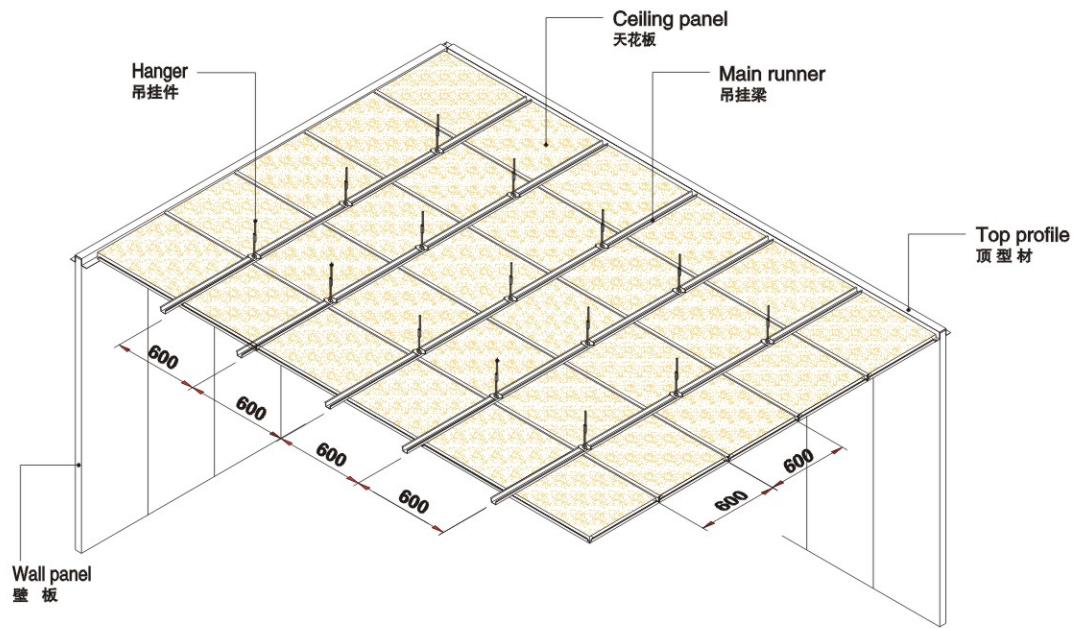
### A 型天花板的安装示意图



# ● CEILING PANEL SYSTEM 天花板系统

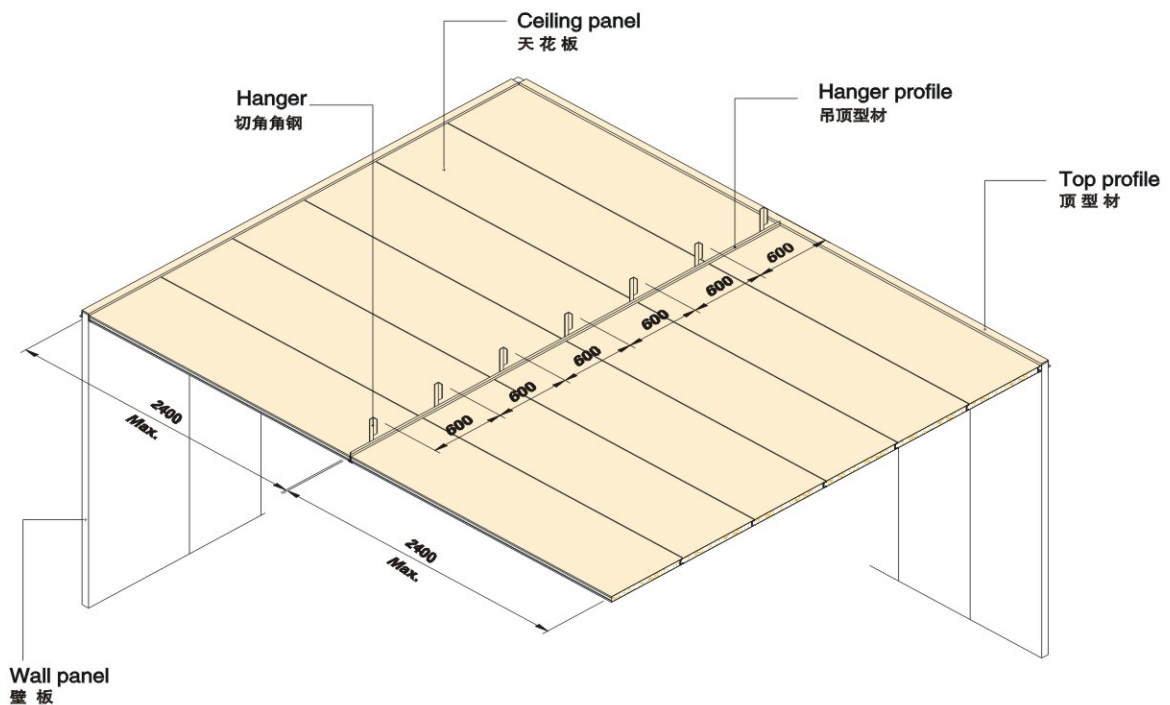
## INSTALLATION OF TYPE T50F CEILING SYSTEM

### T25F 型天花板的安装示意图



## INSTALLATION DRAWING OF CEILING SYSTEM

### Z 型天花板的安装示意图



# CEILING PANEL SYSTEM 天花板系统

## LIST OF PROFILE 型材表

t --- Thickness of steel sheet 钢板厚度  
L --- Length 长度

NO. 编号	NAME 名称	SHAPE 形状	DIMENSION 尺寸	USE FOR 用途	NO. 编号	NAME 名称	SHAPE 形状	DIMENSION 尺寸	USE FOR 用途
172	Top profile 顶型材		t=1.2 mm L=3000 mm 1.62 kg/m Galvanized 镀锌	50 mm Thickness Bulkhead panel 50mm 厚的壁板	179	Hanger profile 斜角吊顶型材		t=1.2 mm, 0.6 mm L=3000 mm 2.10 kg/m PVC 贴膜	Ceiling panel 天花板
173	Top profile 单边顶型材		t=1.2 mm L=3000 mm 1.46 kg/m Galvanized 镀锌	50 mm Thickness Bulkhead panel 50mm 厚的壁板	180	Hanger profile L 吊顶型材		t=1.2 mm, 0.6 mm L=3000 mm 2.68 kg/m PVC 贴膜	Ceiling panel 50 mm Thickness Wall panel 天花板 50mm 厚的壁板
173	Top profile 单边顶型材		t=1.2 mm L=4000 mm 1.27 kg/m Galvanized 镀锌	30 mm Thickness Lining panel 30mm 厚的衬板	180	Hanger profile L 吊顶型材		t=1.2 mm, 0.6 mm L=3000 mm 2.40 kg/m PVC 贴膜	Ceiling panel 30 mm Thickness Lining panel 天花板 30mm 厚的衬板
173	Top profile 单边顶型材		t=1.2 mm L=4000 mm 1.20 kg/m Galvanized 镀锌	25 mm Thickness Lining panel 25mm 厚的衬板	180	Hanger profile L 吊顶型材		t=1.2 mm, 0.6 mm L=3000 mm 2.32 kg/m PVC 贴膜	Ceiling panel 25 mm Thickness Lining panel 天花板 25mm 厚的衬板
174	Top profile 钢壁顶型材		t=1.2 mm L=3000 mm 0.63 kg/m Galvanized 镀锌	Steel wall 钢围壁	185	Hanger L 型吊挂		t=3 mm	Hanger profile 吊顶型材
475	Top profile 双槽顶型材		t=1.2 mm L=3000 mm 1.20 kg/m Galvanized 镀锌	Sound panel B70SA, B70SC 隔声板 B70SA, B70SC	191	Fixing part N 固定件		t=1.5 mm D=50, 30, 25 mm	Top profile 顶型材
473	Top profile 顶型材		t=1.2 mm L=3000 mm 2 kg/m PVC 贴膜	50 mm Thickness Bulkhead panel 50mm 厚的壁板	192	Fixing part h 固定件		t=1.5 mm D=50, 30, 25 mm	Top profile 顶型材
474	Top profile 单边顶型材		t=1.2 mm L=3000 mm 1.64 kg/m PVC 贴膜	50 mm Thickness Bulkhead panel 50mm 厚的壁板	196	Hanger 角钢		L 30x30x3 1.27 kg/m Steel 冷轧钢板	Top profile 顶型材
474	Top profile 单边顶型材		t=1.2 mm L=3000 mm 1.45 kg/m PVC 贴膜	30 mm Thickness Lining panel 30mm 厚的衬板	197	Hanger 切角角钢		L 30x30x3 1.19 kg/m Steel 冷轧钢板	Top profile 顶型材
474	Top profile 单边顶型材		t=1.2 mm L=3000 mm 1.41 kg/m PVC 贴膜	25 mm Thickness Lining panel 25mm 厚的衬板					
476	Top profile 钢壁顶型材		t=1.2 mm L=3000 mm 0.85 kg/m PVC 贴膜	Steel wall 钢围壁					
177	Hanger profile 吊顶型材		t=1.2 mm L=3000 mm 5.89 kg/m PVC 贴膜	Ceiling panel 天花板					

For A type ceiling 用于 A 型天花板

55.22	Main runner 吊挂梁		t=1.0 mm L=4000 mm 0.81 kg/m Galvanized 镀锌	D type ceiling D 型天花板	55.13	Top profile 单边顶型材		t=1.0 mm L=3000 mm 1.23 kg/m PVC 贴膜	D type ceiling D 型天花板
55.4	Joint part 连接件		t=1.0 mm L=322 mm 0.19 kg Galvanized 镀锌	D type ceiling D 型天花板	55.13	Top profile 单边顶型材		t=1.0 mm L=3000 mm 1.16 kg/m PVC 贴膜	D type ceiling D 型天花板
55.24	Connection Runner 中间梁		t=1.0 mm L=4000 mm 1.50 kg/m PVC 贴膜	D type ceiling D 型天花板	55.28	Top profile 钢壁顶型材		t=1.0 mm L=3000 mm 0.72 kg/m PVC 贴膜	D type ceiling D 型天花板
55.12	Top profile 顶型材		t=1.0 mm L=3000 mm 1.45 kg/m PVC 贴膜	D type ceiling D 型天花板	55.15	Hanger 吊顶插座		T=1.5 mm, M8 0.09 kg Galvanized 镀锌	D type ceiling D 型天花板
55.12	Top profile 顶型材		t=1.0 mm L=3000 mm 1.31 kg/m PVC 贴膜	D type ceiling D 型天花板	55.16	Hanger 中间梁吊挂		t=1.0 mm, M8 0.09 kg Galvanized 镀锌	D type ceiling D 型天花板
55.12	Top profile 顶型材		t=1.0 mm L=3000 mm 1.25 kg/m PVC 贴膜	D type ceiling D 型天花板	55.17	Screw 螺杆		M8 0.39 kg/m Galvanized 镀锌	D type ceiling D 型天花板
55.13	Top profile 单边顶型材		t=1.0 mm L=3000 mm 1.37 kg/m PVC 贴膜	D type ceiling D 型天花板	55.18	Rod clip 定位套管		t=1.5 mm 0.03 kg Galvanized 镀锌	D type ceiling D 型天花板

For D type ceiling 用于 D 型天花板



LIST OF PANEL

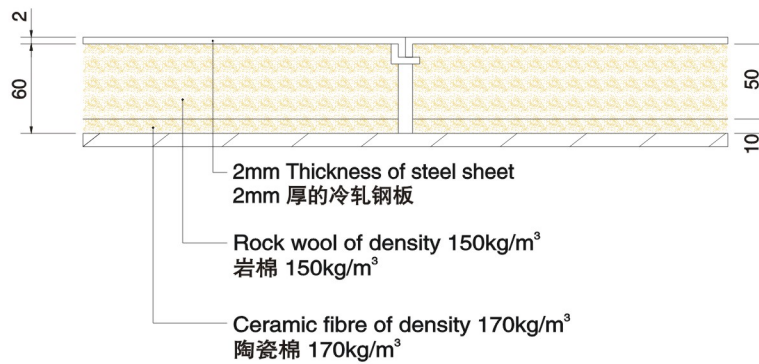
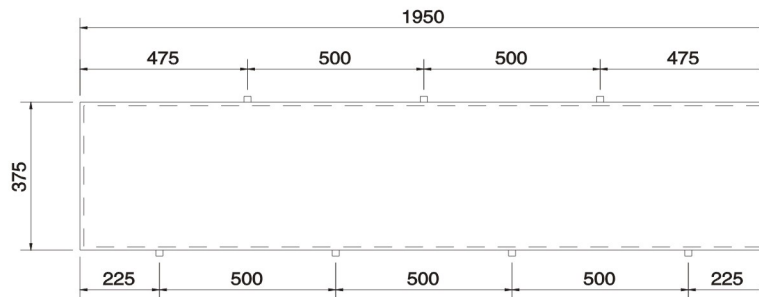
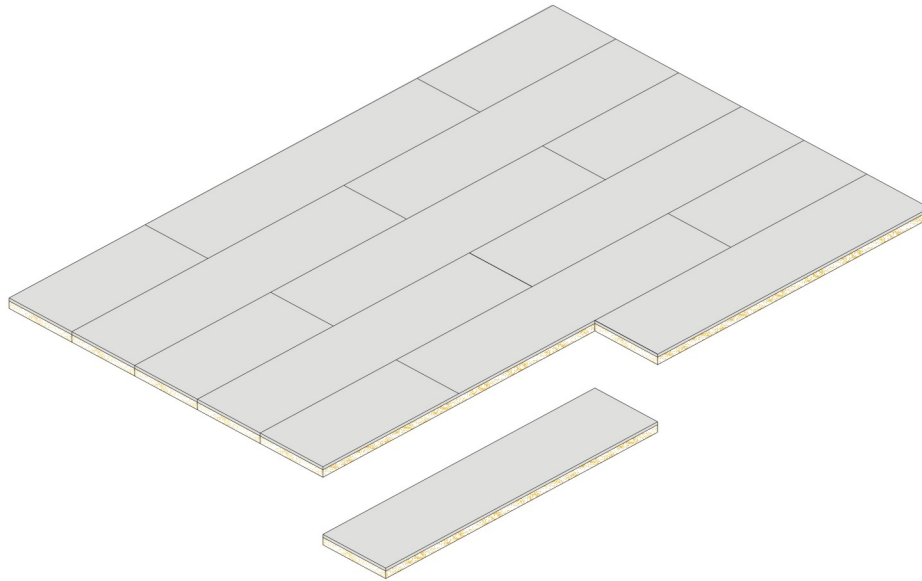
板表

D---Thickness of panel  
H---High of wall panel  
B---Width of panel  
L---Length of ceiling panel and floating floor

板厚  
壁板高度  
板宽  
天花板和浮动地板长度

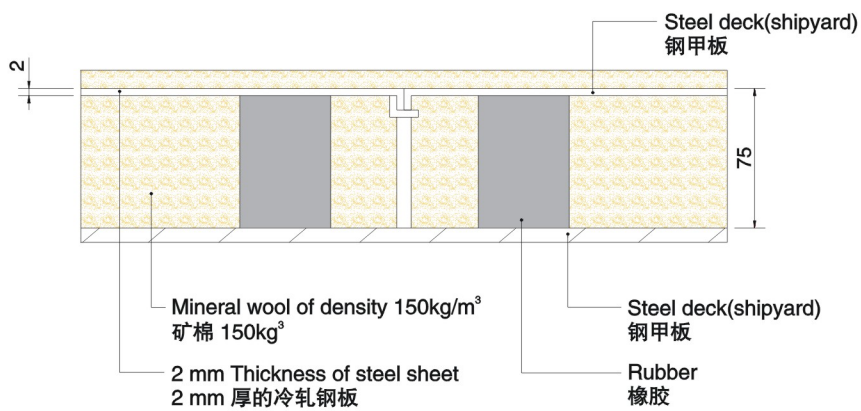
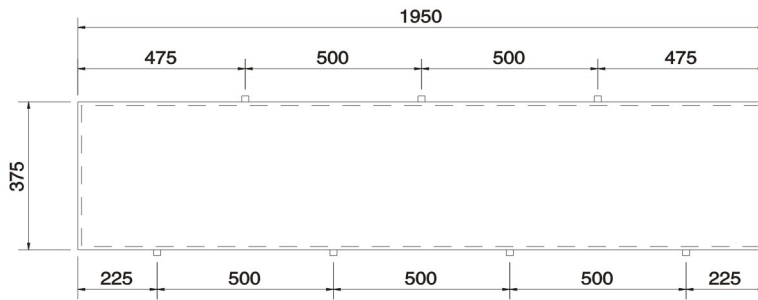
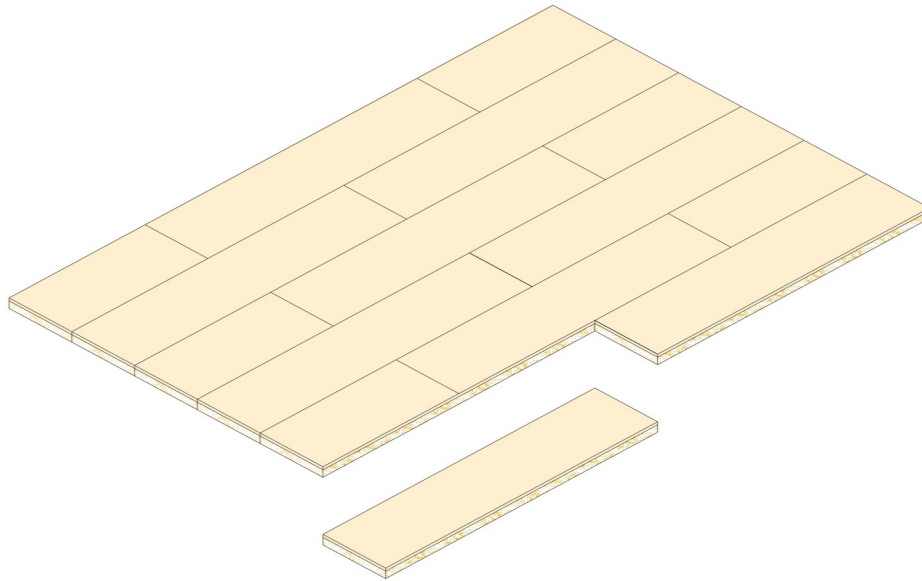
NO. 编号	NAME 名称	SHAPE 形状	DIMENSION 尺寸	USE FOR 用途	NO. 编号	NAME 名称	SHAPE 形状	DIMENSION 尺寸	USE FOR 用途
101	Wall panel 雌雄壁板		D=50 mm H=3000 mm(Max) B=550 mm 18.4 kg/m <sup>2</sup>	Bulkhead panel 独立围壁	161	LA Corner panel LA 转角板		D=50 mm H=3000 mm(Max) 100x100mm 3.4 kg/m	Bulkhead panel 独立围壁
101	Wall panel 雌雄壁板		D=30 mm H=3000 mm(Max) B=550 mm 15.2 kg/m <sup>2</sup>	Lining panel 衬板	162	LB Corner panel LB 转角板		D=30 mm H=3000 mm(Max) 80x80mm 2.5 kg/m	Lining panel 衬板
102	Wall panel 双雌壁板		D=50 mm H=3000 mm(Max) B=550 mm 18.3 kg/m <sup>2</sup>	Bulkhead panel 独立围壁	163	LC Corner panel LC 转角板		D=30 mm H=3000 mm(Max) 100x100mm 2.6 kg/m	Lining panel 衬板
102	Wall panel 双雌壁板		D=30 mm H=3000 mm(Max) B=550 mm 15.2 kg/m <sup>2</sup>	Lining panel 衬板	165	LE Corner panel LE 转角板		D=50 mm, 30mm H=3000 mm(Max) 100x100mm 2.9 kg/m	Bulkhead panel Lining panel 独立围壁与衬板
104	Washbowl panel 卫生板		D=50 mm H=3000 mm(Max) B=550 mm 28.5 kg/m <sup>2</sup>	Washroom 潮湿房间	166	TA Corner panel TA 转角板		D=50 mm H=3000 mm(Max) 150x100 mm 4.4 kg/m	Bulkhead panel 独立围壁
105	Reinforced panel 加强板		D=50 mm H=3000 mm(Max) B=750 mm 33.9 kg/m <sup>2</sup>	Fixing washbowl 固定洗面器	167	TB Corner panel TB 转角板		D=50 mm, 30 mm H=3000 mm(Max) 130x100 mm 4.0 kg/m	Bulkhead panel Lining panel 独立围壁与衬板
106	Cable panel 电缆板		D=50 mm H=3000 mm(Max) B=550 mm 20.1 kg/m <sup>2</sup>	Fixing electric button 安装电器开关	168	TC Corner panel TC 转角板		D=30 mm, 50 mm H=3000 mm(Max) 150x80 mm 3.8 kg/m	Bulkhead panel Lining panel 独立围壁与衬板
430	Wall panel C型单面板		D=25 mm H=3000 mm(Max) B=550 mm 14.0 kg/m <sup>2</sup>	Lining panel 衬板	451	External Corner panel C型L外转角板		D=25 mm H=3000 mm(Max) 100x100 mm 2.6 kg/m	Lining panel 衬板
431	Wall panel C型双面板		D=50 mm H=3000 mm(Max) B=550 mm 17.9 kg/m <sup>2</sup>	Bulkhead panel 独立围壁	452	Internal Corner panel C型L内转角板		D=25 mm H=3000 mm(Max) 50x50 mm 2.0 kg/m	Lining panel 衬板
432	End panel C型单面端头板		D=25 mm H=3000 mm(Max) B=550 mm 13.8 kg/m <sup>2</sup>	Lining panel 衬板	453	Corner panel C型L转角板		D=50 mm H=3000 mm(Max) 100x100 mm 3.0 kg/m	Bulkhead panel 独立围壁
433	End panel C型双面板端头板		D=50 mm H=3000 mm(Max) B=550 mm 17.6 kg/m <sup>2</sup>	Bulkhead panel 独立围壁	457	Corner panel C型TA转角板		D=50 mm H=3000 mm(Max) 150x100 mm 3.2 kg/m	Bulkhead panel 独立围壁
435	Reinforced panel C型单面加强板		D=25 mm H=3000 mm(Max) B=750 mm 25.8 kg/m <sup>2</sup>	Fixing washbowl 固定洗面器	458	Corner panel C型TB转角板		D=50 mm, 25 mm H=3000 mm(Max) 150x75 mm 2.7 kg/m	Bulkhead panel Lining panel 独立围壁与衬板
436	Reinforced panel C型双面加强板		D=50 mm H=3000 mm(Max) B=750 mm 34.1 kg/m <sup>2</sup>	Fixing washbowl 固定洗面器	454	Corner panel AC型L转角板		D=50 mm H=3000 mm(Max) 100x100 mm 3.1 kg/m	Bulkhead panel 独立围壁
437	Washbowl panel C型卫生板		D=50 mm H=3000 mm(Max) B=550 mm 28.1 kg/m <sup>2</sup>	Washroom 潮湿房间	55.1	Ceiling 悬挂式天花板		D=25 mm L=4000 mm(Max) B=300 mm 3.3 kg/m <sup>2</sup>	Ceiling 天花板
445	AC Panel AC双面板		D=50 mm H=3000 mm(Max) B=550 mm 18.1 kg/m <sup>2</sup>	Bulkhead panel 独立围壁	55.2	End ceiling 悬挂式端头天花板		D=25 mm L=4000 mm(Max) B=300 mm(Max) 3.3 kg/m <sup>2</sup>	Ceiling 天花板
121	Ceiling 雌雄天花板		D=40 mm L=2400 mm(Max) B=550 mm 16.8 kg/m <sup>2</sup>	Ceiling 天花板					
121	Ceiling 雌雄天花板		D=30 mm L=2400 mm(Max) B=550 mm 15.2 kg/m <sup>2</sup>	Ceiling 天花板					
122	End ceiling 端头天花板		D=40 mm L=2400 mm(Max) B=550 mm 16.4 kg/m <sup>2</sup>	Ceiling 天花板					
122	End ceiling 端头天花板		D=30 mm L=2400 mm(Max) B=550 mm 14.9 kg/m <sup>2</sup>	Ceiling 天花板					
131	Floating Floor 浮动地板		D=60 mm L=1950 mm(Max) B=450 mm 27.7 kg/m <sup>2</sup>	Floor 地板					

TYPE  
型号 FD60



Type	型号	FD60	
Fire class	防火级别	A-60	
Weight	重量	27.7 kg/m <sup>2</sup>	
Sound reduction	隔声量	43 dB(A)	
Surface finish	面材	2mm Thickness of steel sheet	2mm 厚的冷轧钢板
Standard Dimension	标准尺寸	375mm Width(Max.) × 1950mm Length (Max.)	宽度 375mm × 长度可选 (最长 1950mm)
Tolerances	公差	Width ± 1, Length ± 1	宽度 ± 1, 长度 ± 1

TYPE  
型号 FZ75



Type	型号	FZ75	
Fire class	防火级别	A-60	
Weight	重量	28.5 kg/m <sup>2</sup>	
Sound reduction	隔声量	/	
Surface finish	面材	2mm Thickness of steel sheet	2mm 厚的冷轧钢板
Standard Dimension	标准尺寸	450mm Width(Max.) × 1950mm Length (Max.)	宽度 450mm × 长度可选 (最长 1950mm)
Tolerances	公差	Width ± 1, Length ± 1	宽度 ± 1, 长度 ± 1

# T RUNK TYPE FRAME 箱型框

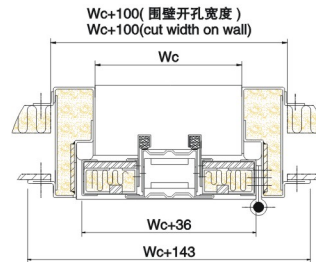
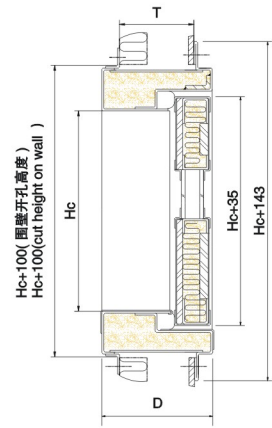
FIRE PROOF CABIN DOOR  
舱室防火门

TYPE  
型号 MA60TT

Technical Specification  
技术要求

门扇 0.7mm 贴 PVC 膜的镀锌 钢板 /1.2mm 烤漆钢板	DOOR LEAF 0.7mmPVC-laminated Galvanized steel sheet or 1.2mm steel sheet (baked paint).
门框 1.5mm 钢板烤漆	DOOR FRAME 1.5mm steel sheet baked paint
门扇厚 贴塑 : 43mm 烤漆 : 45mm	THICKNESS OF DOOR LEAF PVC: 43mm Baked paint: 45mm
隔声量 36 dB(A)	SOUND REDUCTION 36 dB(A)
"D" 表示木作厚度 "D" 表示门框厚度	"T" is wall thickness; "D" is door frame thickness.

注: 1. 窗和逃生口可选  
note:1.window and escape panel are optional.



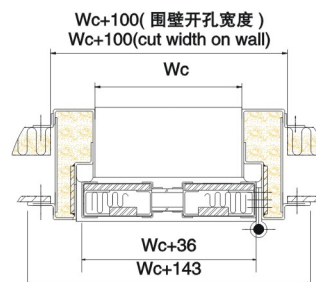
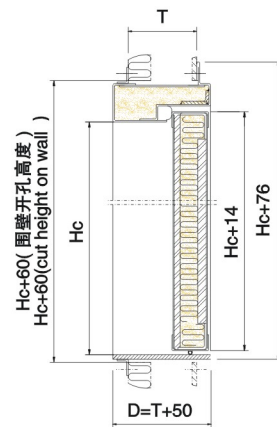
FIRE PROOF CABIN DOOR  
舱室防火门

TYPE  
型号 MA60PX

Technical Specification  
技术要求

门扇 0.7mm 贴 PVC 膜的镀锌 钢板 /1.2mm 烤漆钢板	DOOR LEAF 0.7mmPVC-laminated Galvanized steel sheet or 1.2mm steel sheet (baked paint).
门框 1.5mm 钢板烤漆	DOOR FRAME 1.5mm steel sheet baked paint
门扇厚 贴塑 : 43mm 烤漆 : 45mm	THICKNESS OF DOOR LEAF PVC: 43mm Baked paint: 45mm
隔声量 35 dB(A)	SOUND REDUCTION 35 dB(A)
"T" 表示木作厚度 "D" 表示门框厚度	"T" is wall thickness; "D" is door frame thickness.

注: 1. 窗和小消防门可选  
note:1.window and hose port are optional.



# T RUNK TYPE FRAME 箱型框

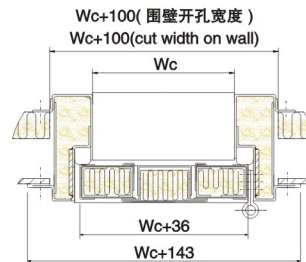
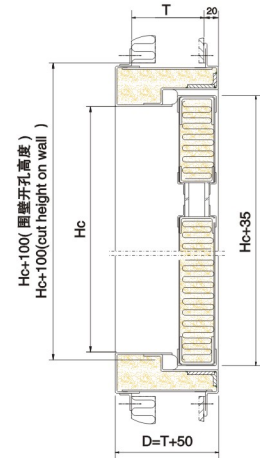
FIRE PROOF CABIN DOOR  
舱室防火门

TYPE  
型号 MA15TX

Technical Specification  
技术要求

门扇 0.7mm 贴 PVC 膜的镀锌 钢板 / 1.2mm 烤漆钢板	DOOR LEAF 0.7mmPVC-laminated Galvanized steel sheet or 1.2mm steel sheet (baked paint).
门框 1.5mm 钢板烤漆	DOOR FRAME 1.5mm steel sheet baked paint
门扇厚 贴塑 : 38mm 烤漆 : 40mm	THICKNESS OF DOOR LEAF PVC: 38mm Baked paint: 40mm
隔声量 32 dB(A)	SOUND REDUCTION 32 dB(A)
"T" 表示木作厚度 "D" 表示门框厚度	"T" is wall thickness; "D" is door frame thickness.

注: 1. 窗、逃生口和小消防门可选  
note: 1. window, escape panel and hose port are optional.



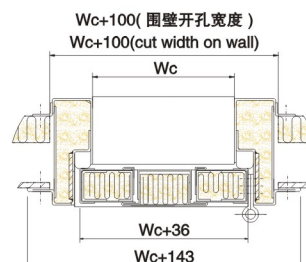
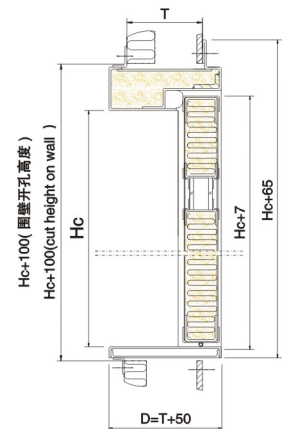
FIRE PROOF CABIN DOOR  
舱室防火门

TYPE  
型号 MA15WX

Technical Specification  
技术要求

门扇 0.7mm 贴 PVC 膜的镀锌 钢板 / 1.2mm 烤漆钢板	DOOR LEAF 0.7mmPVC-laminated Galvanized steel sheet or 1.2mm steel sheet (baked paint).
门框 1.5mm 钢板烤漆	DOOR FRAME 1.5mm steel sheet baked paint
门扇厚 贴塑 : 38mm 烤漆 : 40mm	THICKNESS OF DOOR LEAF PVC: 38mm Baked paint: 40mm
隔声量 37 dB(A)	SOUND REDUCTION 37 dB(A)
"T" 表示木作厚度 "D" 表示门框厚度	"T" is wall thickness; "D" is door frame thickness.

注: 1. 窗、逃生口和小消防门可选  
note: 1. window, escape panel and hose port are optional.



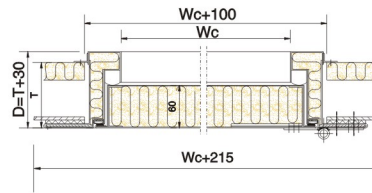
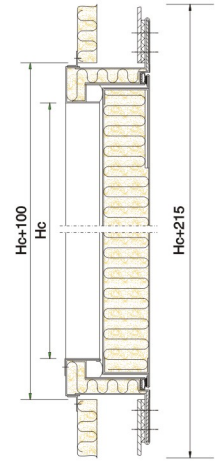
# T RUNK TYPE FRAME 箱型框

WEATHERTIGHT DOOR  
风雨密门

TYPE  
型号 QMA60

## Technical Specification 技术要求

门扇 1.2mm 烤漆钢板 / 1.2mm 不锈钢板	DOOR LEAF 1.2mm steel sheet faced with baked paint or stainless steel
门框 1.5mm 钢板	DOOR FRAME 1.5mm steel sheet
门扇厚 60mm	THICKNESS OF DOOR LEAF 60mm
"T" 表示木作厚度 "D" 表示门框厚度	"T" is wall thickness; "D" is door frame thickness.

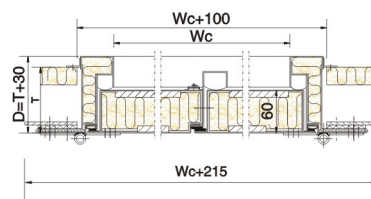
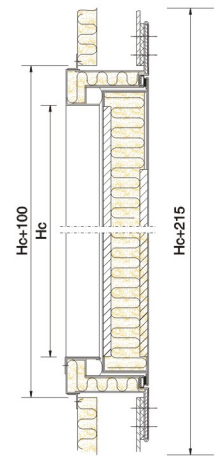


WEATHERTIGHT DOOR  
风雨密门

TYPE  
型号 QSMA60

## Technical Specification 技术要求

门扇 1.2mm 烤漆钢板 / 1.2mm 不锈钢板	DOOR LEAF 1.2mm steel sheet faced with baked paint or stainless steel
门框 1.5mm 钢板	DOOR FRAME 1.5mm steel sheet
门扇厚 60mm	THICKNESS OF DOOR LEAF 60mm
"T" 表示木作厚度 "D" 表示门框厚度	"T" is wall thickness; "D" is door frame thickness.



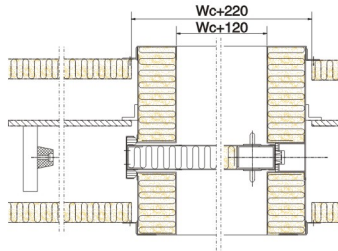
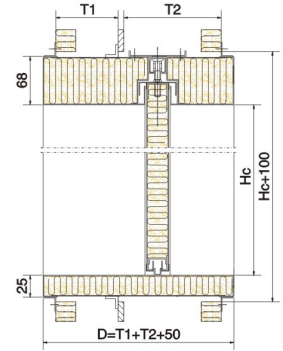
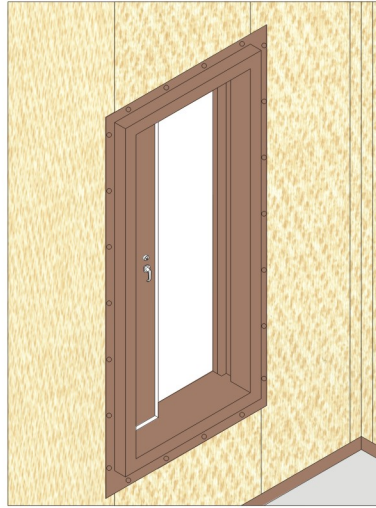
# T RUNK TYPE FRAME 箱型框

FIRE PROOF CABIN SLIDING DOOR  
舱室防火移门

TYPE  
型号 YMA15

## Technical Specification 技术要求

门扇 0.7mm 贴 PVC 膜的镀锌 钢板 / 1.2mm 烤漆钢板	DOOR LEAF 0.7mmPVC-laminated Galvanized steel sheet or 1.2mm steel sheet (baked paint).
门框 1.5mm 钢板烤漆	DOOR FRAME 1.5mm steel sheet baked paint
门扇厚 贴塑 : 38mm 烤漆 : 40mm	THICKNESS OF DOOR LEAF PVC: 38mm Baked paint: 40mm
"T1、T2" 表示木作厚度 "D" 表示门框厚度	"T1、T2" is wall thickness; "D" is door frame thickness.

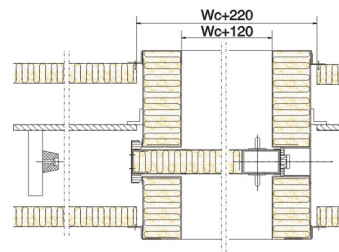
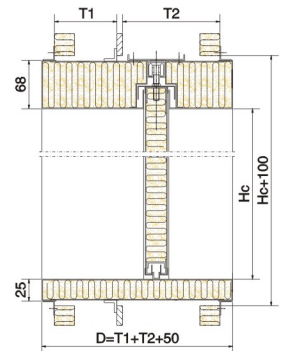
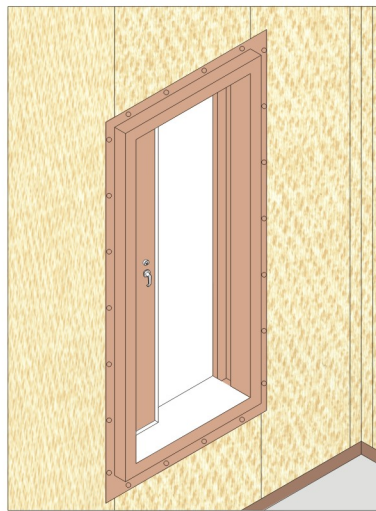


FIRE PROOF CABIN SLIDING DOOR  
舱室防火移门

TYPE  
型号 YMA-60

## Technical Specification 技术要求

门扇 0.7mm 贴 PVC 膜的镀锌 钢板 / 1.2mm 烤漆钢板	DOOR LEAF 0.7mmPVC-laminated Galvanized steel sheet or 1.2mm steel sheet (baked paint).
门框 1.5mm 钢板烤漆	DOOR FRAME 1.5mm steel sheet baked paint
门扇厚 贴塑 : 43mm 烤漆 : 45mm	THICKNESS OF DOOR LEAF PVC: 43mm Baked paint: 45mm
"T1、T2" 表示木作厚度 "D" 表示门框厚度	"T1、T2" is wall thickness; "D" is door frame thickness.



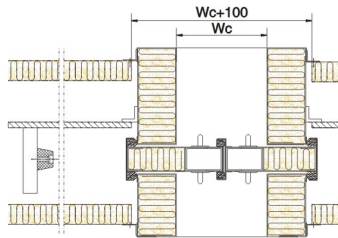
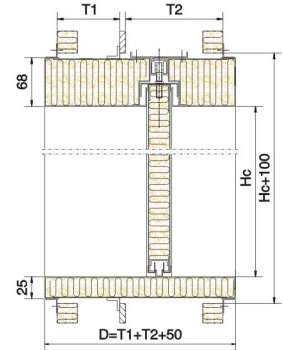
# T RUNK TYPE FRAME 箱型框

FIRE PROOF CABIN SLIDING DOOR  
舱室防火移门

TYPE  
型号 YMA15

### Technical Specification 技术要求

门扇 0.7mm 贴 PVC 膜的镀锌 钢板 /1.2mm 烤漆钢板	DOOR LEAF 0.7mmPVC-laminated Galvanized steel sheet or 1.2mm steel sheet (baked paint).
门框 1.5mm 钢板烤漆	DOOR FRAME 1.5mm steel sheet baked paint
门扇厚 贴塑 : 38mm 烤漆 : 40mm	THICKNESS OF DOOR LEAF PVC: 38mm Baked paint: 40mm
"T1、T2" 表示木作厚度 "D" 表示门框厚度	"T1、T2" is wall thickness; "D" is door frame thickness.

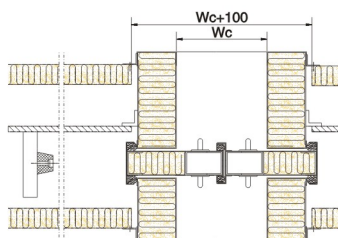
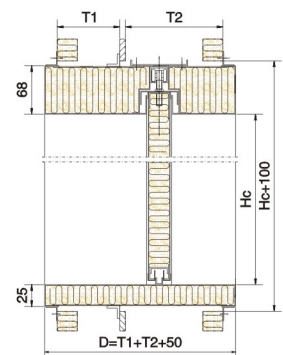


FIRE PROOF CABIN SLIDING DOOR  
舱室防火移门

TYPE  
型号 YMA-60

### Technical Specification 技术要求

门扇 0.7mm 贴 PVC 膜的镀锌 钢板 /1.2mm 烤漆钢板	DOOR LEAF 0.7mmPVC-laminated Galvanized steel sheet or 1.2mm steel sheet (baked paint).
门框 1.5mm 钢板烤漆	DOOR FRAME 1.5mm steel sheet baked paint
门扇厚 贴塑 : 43mm 烤漆 : 45mm	THICKNESS OF DOOR LEAF PVC: 43mm Baked paint: 45mm
"T1、T2" 表示木作厚度 "D" 表示门框厚度	"T1、T2" is wall thickness; "D" is door frame thickness.





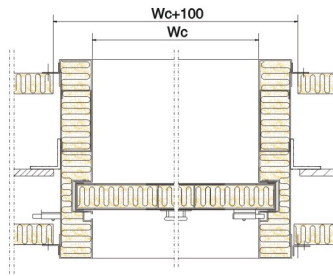
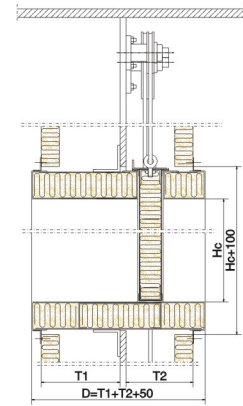
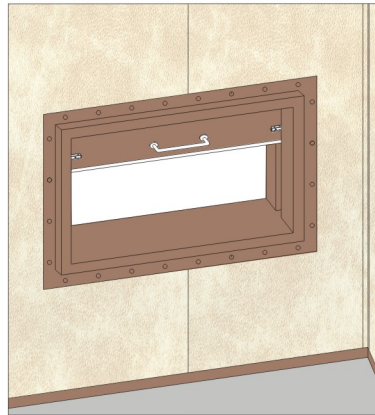
# T RUNK TYPE FRAME 箱型框

FIRE PROOF CABIN SLIDING DOOR  
舱室防火上移窗

TYPE  
型号 YCA0-S

## Technical Specification 技术要求

门扇 0.7mm 贴 PVC 膜的镀锌 钢板 /1.2mm 烤漆钢板	DOOR LEAF 0.7mmPVC-laminated Galvanized steel sheet or 1.2mm steel sheet (baked paint).
门框 1.5mm 钢板烤漆	DOOR FRAME 1.5mm steel sheet baked paint
门扇厚 贴塑 : 38mm 烤漆 : 40mm	THICKNESS OF DOOR LEAF PVC: 38mm Baked paint: 40mm
"T1、T2" 表示木作厚度 "D" 表示门框厚度	"T1、T2" is wall thickness; "D" is door frame thickness.

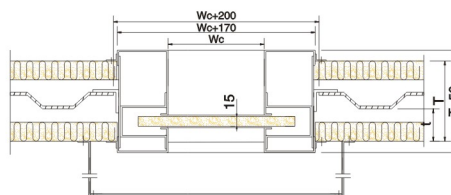
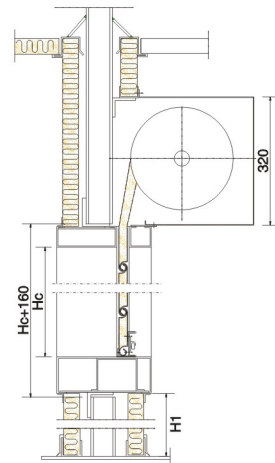
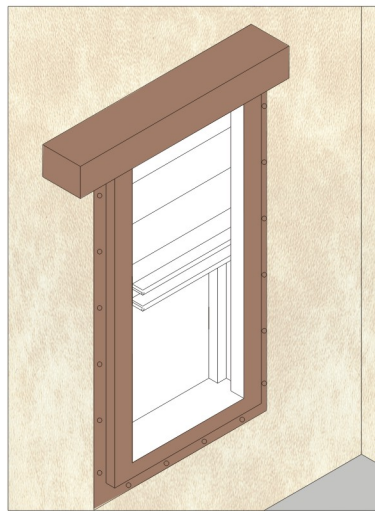


FIRE PROOF ROLLER SHUTTER(DOOR)  
A0 级船用防火卷帘窗 (门)

TYPE  
型号 JLMA0

## Technical Specification 技术要求

门扇 15mm 厚不锈钢卷帘板	DOOR LEAF 15mm stainless steel shutter
门框 1.5mm 钢板	DOOR FRAME 1.5mm steel sheet baked paint
最大孔径尺寸 2400mmx2000mm	Wcmax.x Hcma. 2400mmx2000mm
"T" 表示木作厚度 "D" 表示门框厚度	"T" is wall thickness; "D" is door frame thickness.



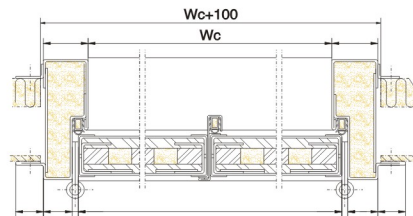
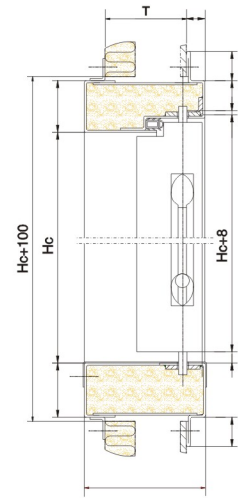
# T RUNK TYPE FRAME 箱型框

FIRE PROOF CABIN DOOR  
舱室防火门

TYPE  
型号 MA60WS

Technical Specification  
技术要求

门扇 0.7mm 贴 PVC 膜的镀锌 钢板 / 1.2mm 烤漆钢板	DOOR LEAF 0.7mmPVC-laminated Galvanized steel sheet or 1.2mm steel sheet (baked paint).
门框 1.5mm 钢板烤漆	DOOR FRAME 1.5mm steel sheet baked paint
门扇厚 贴塑 : 43mm 烤漆 : 45mm	THICKNESS OF DOOR LEAF PVC: 43mm Baked paint: 45mm
隔声量 37 dB(A)	SOUND REDUCTION 37 dB(A)
"T" 表示木作厚度 "D" 表示门框厚度	"T" is wall thickness; "D" is door frame thickness.

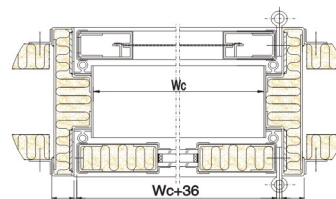
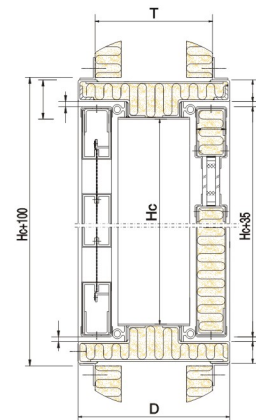


FIRE PROOF CABIN DOOR  
舱室防火门

TYPE  
型号 SCMA15A

Technical Specification  
技术要求

门扇 1 0.7mm 贴 PVC 膜的镀锌 钢板 / 1.2mm 烤漆钢板	DOOR LEAF 1 0.7mmPVC-laminated Galvanized steel sheet or 1.2mm steel sheet (baked paint).
门扇 2 1.25X1.25mm 钢丝网	DOOR LEAF 2 1.25X1.25mm stainless steel thread net
门框 1.5mm 钢板烤漆	DOOR FRAME 1.5mm steel sheet baked paint
门扇厚 贴塑 : 38mm 烤漆 : 40mm	THICKNESS OF DOOR LEAF PVC: 38mm Baked paint: 40mm
"T" 表示木作厚度 "D" 表示门框厚度	"T" is wall thickness; "D" is door frame thickness.



# S TYPE FRAME S 型框

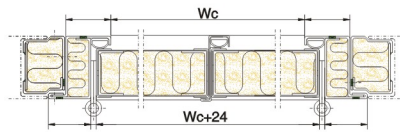
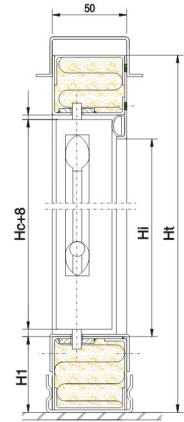
FIRE PROOF CABIN DOOR  
舱室防火门

TYPE  
型号 SMB15A-C

Technical Specification  
技术要求

门扇 0.7mm 贴 PVC 膜的镀锌 钢板 / 1.2mm 烤漆钢板	DOOR LEAF 0.7mmPVC-laminated Galvanized steel sheet or 1.2mm steel sheet (baked paint).
门框 1.5mm 钢板烤漆	DOOR FRAME 1.5mm steel sheet baked paint
门扇厚 贴塑 : 38mm 烤漆 : 40mm	THICKNESS OF DOOR LEAF PVC: 38mm Baked paint: 40mm
隔声量 36 dB(A)	SOUND REDUCTION 36 dB(A)
"T" 表示木作厚度 "D" 表示门框厚度	"T" is wall thickness; "D" is door frame thickness.

注：可带通风栅，逃生口等。  
\* Louvers, escape panels etc. can fitted as option.



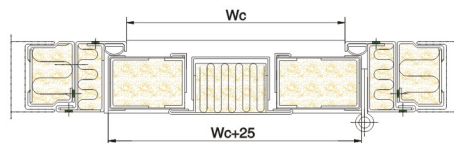
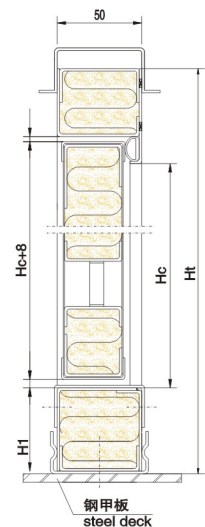
FIRE PROOF CABIN DOOR  
舱室防火门

TYPE  
型号 NMB15A

Technical Specification  
技术要求

门扇 0.7mm 贴 PVC 膜的镀锌 钢板 / 1.2mm 烤漆钢板	DOOR LEAF 0.7mmPVC-laminated Galvanized steel sheet or 1.2mm steel sheet (baked paint).
门框 1.5mm 钢板烤漆	DOOR FRAME 1.5mm steel sheet baked paint
门扇厚 贴塑 : 38mm 烤漆 : 40mm	THICKNESS OF DOOR LEAF PVC: 38mm Baked paint: 40mm
隔声量 31 dB(A)	SOUND REDUCTION 31 dB(A)

注：可带通风栅，逃生口等。  
\* Louvers, escape panels etc. can fitted as option.



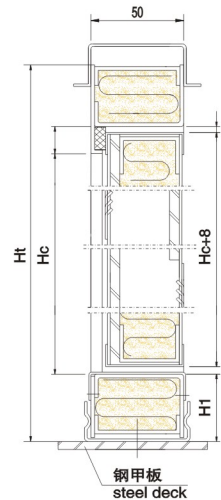
# S TYPE FRAME S 型框

FIRE PROOF CABIN DOOR  
舱室防火门

TYPE  
型号 MB15AXF

### Technical Specification 技术要求

门扇 0.7mm 贴 PVC 膜的镀锌 钢板 /1.2mm 烤漆钢板	DOOR LEAF 0.7mmPVC-laminated Galvanized steel sheet or 1.2mm steel sheet (baked paint).
门框 1.5mm 钢板烤漆	DOOR FRAME 1.5mm steel sheet baked paint
门扇厚 贴塑 : 38mm 烤漆 : 40mm	THICKNESS OF DOOR LEAF PVC: 38mm Baked paint: 40mm
隔声量 38 dB(A)	SOUND REDUCTION 38 dB(A)



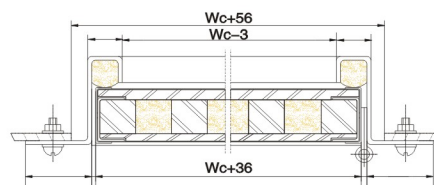
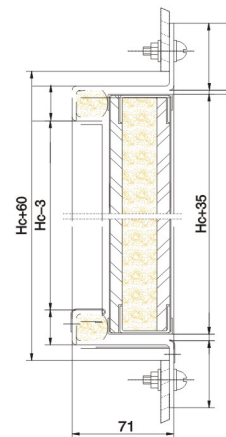
# Z TYPE FRAME Z 型框

FIRE PROOF CABIN DOOR  
舱室防火门

TYPE  
型号 MA60A

### Technical Specification 技术要求

门扇 0.7mm 贴 PVC 膜的镀锌 钢板 /1.2mm 烤漆钢板	DOOR LEAF 0.7mmPVC-laminated Galvanized steel sheet or 1.2mm steel sheet (baked paint).
门框 1.5mm 钢板烤漆	DOOR FRAME 1.5mm steel sheet baked paint
门扇厚 贴塑 : 43mm 烤漆 : 45mm	THICKNESS OF DOOR LEAF PVC: 43mm Baked paint: 45mm



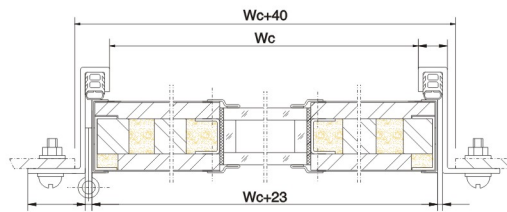
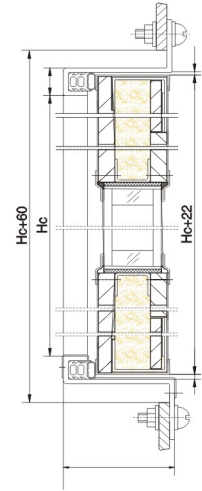
# Z TYPE FRAME Z 型框

FIRE PROOF CABIN DOOR  
舱室防火门

TYPE  
型号 MA60A-C

## Technical Specification 技术要求

门扇 0.7mm 贴 PVC 膜的镀锌 钢板 / 1.2mm 烤漆钢板	DOOR LEAF 0.7mmPVC-laminated Galvanized steel sheet or 1.2mm steel sheet (baked paint).
门框 3mm 钢板烤漆	DOOR FRAME 3mm steel sheet baked paint
门扇厚 贴塑 : 43mm 烤漆 : 45mm	THICKNESS OF DOOR LEAF PVC: 43mm Baked paint: 45mm

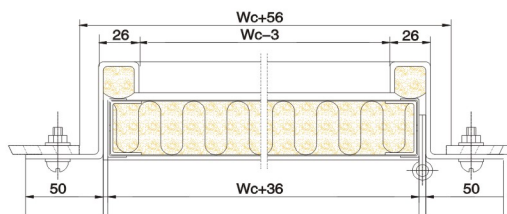
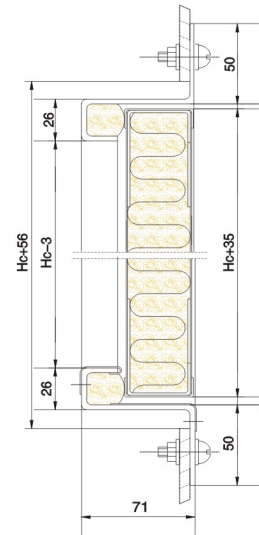


FIRE PROOF CABIN DOOR  
舱室防火门

TYPE  
型号 MA15

## Technical Specification 技术要求

门扇 0.7mm 贴 PVC 膜的镀锌 钢板 / 1.2mm 烤漆钢板	DOOR LEAF 0.7mmPVC-laminated Galvanized steel sheet or 1.2mm steel sheet (baked paint).
门框 3mm 钢板烤漆	DOOR FRAME 3mm steel sheet baked paint
门扇厚 贴塑 : 38mm 烤漆 : 40mm	THICKNESS OF DOOR LEAF PVC: 38mm Baked paint: 40mm



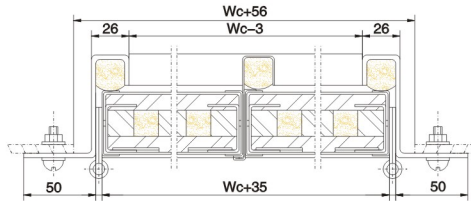
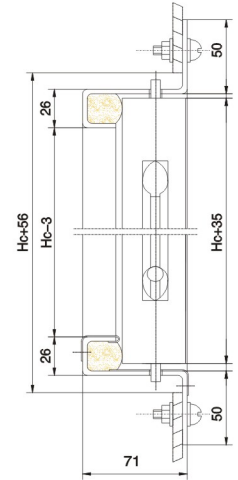
# Z TYPE FRAME Z 型框

FIRE PROOF CABIN DOOR  
舱室防火门

TYPE  
型号 SMA60A

## Technical Specification 技术要求

门扇 0.7mm 贴 PVC 膜的镀锌 钢板 / 1.2mm 烤漆钢板	DOOR LEAF 0.7mm PVC-laminated Galvanized steel sheet or 1.2mm steel sheet (baked paint).
门框 3mm 钢板烤漆	DOOR FRAME 3mm steel sheet baked paint
门扇厚 贴塑 : 43mm 烤漆 : 45mm	THICKNESS OF DOOR LEAF PVC: 43mm Baked paint: 45mm

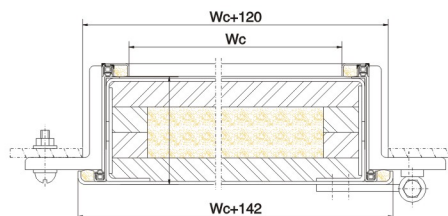
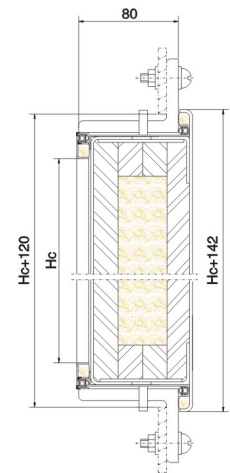


FIRE PROOF CABIN DOOR  
舱室防火门

TYPE  
型号 MH120

## Technical Specification 技术要求

门扇 3mm 烤漆钢板	DOOR LEAF 3mm steel sheet faced with baked paint.
门框 L125x80x8 烤漆	DOOR FRAME angel steel L125x80x8 baked paint
门扇厚 烤漆 : 82mm	THICKNESS OF DOOR LEAF Baked paint: 82mm



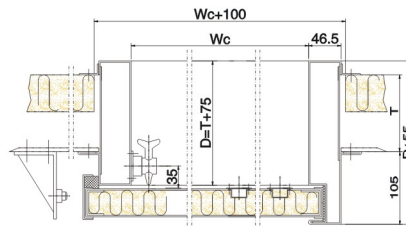
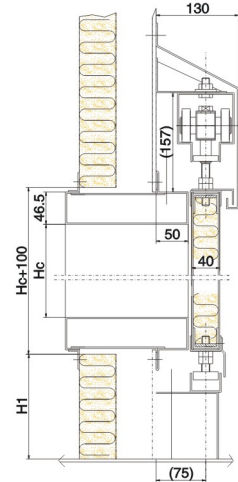
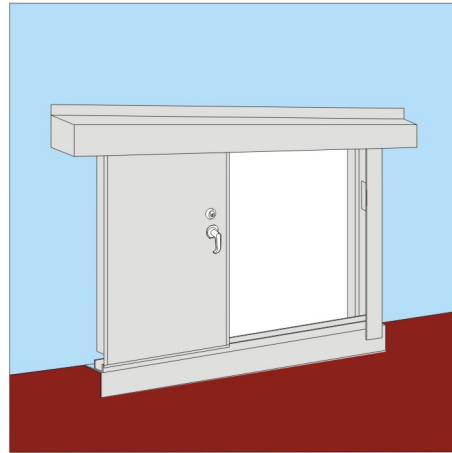
# T RUNK TYPE FRAME 箱型框

SLIDING DOOR FOR WHEELHOUSE  
驾驶室移门

TYPE  
型号 JSYM

## Technical Specification 技术要求

门扇 0.7mm 贴 PVC 膜的镀锌 钢板 /1.2mm 烤漆钢板	DOOR LEAF 0.7mmPVC-laminated Galvanized steel sheet or 1.2mm steel sheet (baked paint).
门框 1.5mm 钢板烤漆	DOOR FRAME 1.5mm steel sheet baked paint
门扇厚 贴塑 : 38mm 烤漆 : 40mm	THICKNESS OF DOOR LEAF PVC: 38mm Baked paint: 40mm
"T" 表示木作厚度 "D" 表示门框厚度	"T" is wall thickness; "D" is door frame thickness.

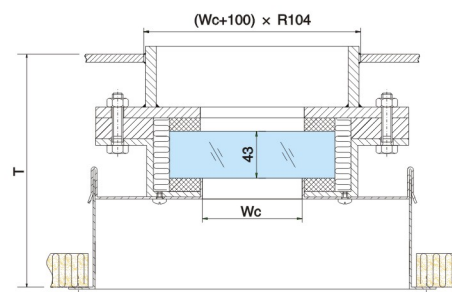
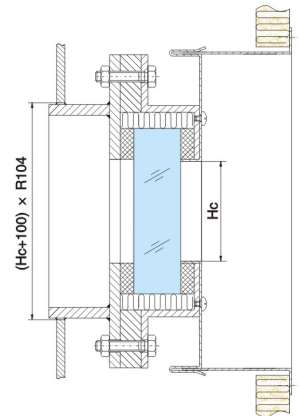
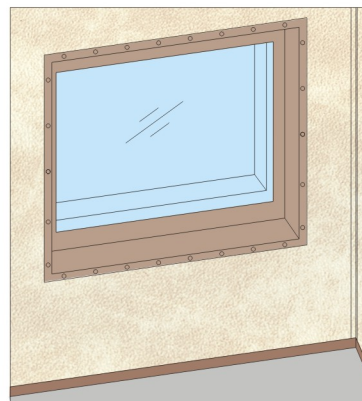


## FIRE PROOF CABIN SLIDING DOOR 固定式防火矩形窗

TYPE  
型号 CA60

## Technical Specification 技术要求

窗扇 窗玻璃厚度: 43mm 最大透光尺寸:	window leaf Window glass 43mm thickness Wc max. x Hc max. 800mmx1200mm
窗框 10mm 钢板 +5mm 钢板 +1.5mm 钢板	window frame 10mm steel plate+5mm steel plate+1.5mm steel sheet
窗最大外形尺寸	WINDOW EXTERNAL SIZE 960mmx1360mm



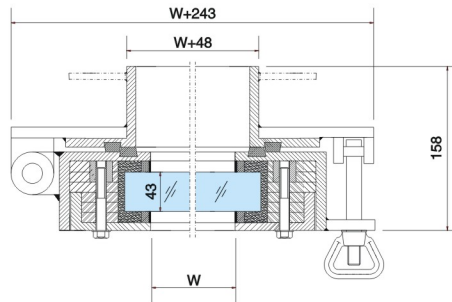
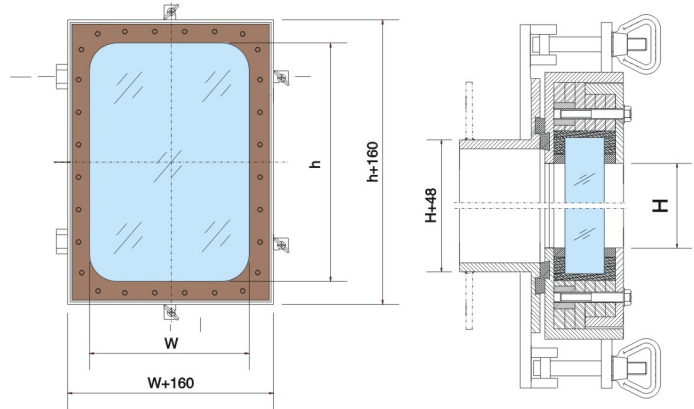
# T RUNK TYPE FRAME 箱型框

FIRE PROOF CABIN PORTHOLE  
开启式防火矩形窗

TYPE  
型号 KCA60

## Technical Specification 技术要求

窗扇 窗玻璃厚度: 43mm 最大透光尺寸: 800mmx1200mm	window leaf Window glass 43mm thickness Wc max. x Hc max. 800mmx1200mm
窗框 10mm 钢板 +5mm 钢板 +1.5mm 钢板	window frame 10mm steel plate+5mm steel plate+1.5mm steel sheet
窗最大外形尺寸 960mmx1360mm	WINDOW EXTERNAL SIZE 960mmx1360mm

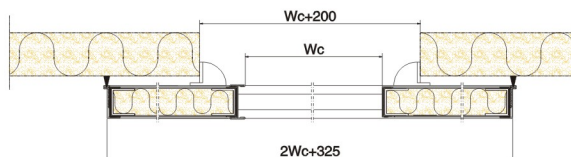
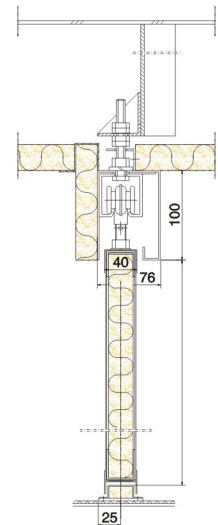


# FIRE PROOF CABIN SLIDING DOUBLE DOOR C 级舱室双扇防火移门

TYPE  
型号 TSYM

## Technical Specification 技术要求

门扇 0.7mm 贴 PVC 膜的镀锌 钢板 /1.2mm 烤漆钢板	DOOR LEAF 0.7mmPVC-laminated Galvanized steel sheet or 1.2mm steel sheet (baked paint).
门框 1.5mm 钢板烤漆	DOOR FRAME 1.5mm steel sheet baked paint
门扇厚 贴塑: 38mm 烤漆: 40mm	THICKNESS OF DOOR LEAF PVC: 38mm Baked paint: 40mm





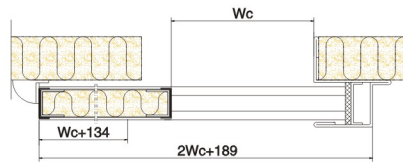
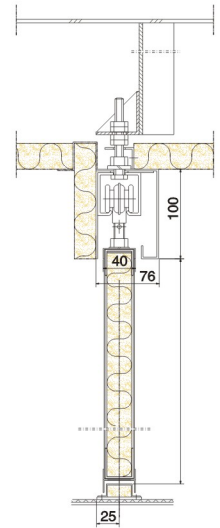
# T RUNK TYPE FRAME 箱型框

FIRE PROOF CABIN SLIDING DOUBLE DOOR  
舱室单扇防火移门

TYPE  
型号 TYM60

## Technical Specification 技术要求

窗扇 窗玻璃厚度: 43mm 最大透光尺寸: 800mmx1200mm	window leaf Window glass 43mm thickness Wc max. x Hc max. 800mmx1200mm
窗框 10mm 钢板 +5mm 钢板 +1.5mm 钢板	window frame 10mm steel plate+5mm steel plate+1.5mm steel sheet
窗最大外形尺寸 960mmx1360mm	WINDOW EXTERNAL SIZE 960mmx1360mm

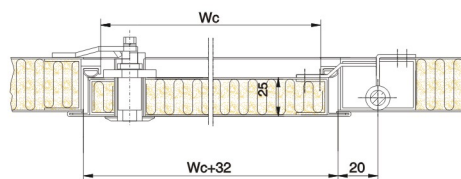
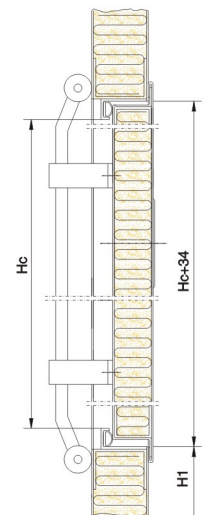


# A CCESS DOOR A 舱室检修门

TYPE  
型号 LJXMB15

## Technical Specification 技术要求

门扇 0.7mm 贴 PVC 膜的镀锌 钢板 / 1.2mm 烤漆钢板	DOOR LEAF 0.7mmPVC-laminated Galvanized steel sheet or 1.2mm steel sheet (baked paint).
门框 复合防火岩棉板	DOOR FRAME Compound bulkhead panel
门扇尺寸 Hc x wc x d 1700mmx650mmx25mm	THICKNESS OF DOOR LEAF Hcmax x Wcmax x d 1700mm x 650mm x 25mm

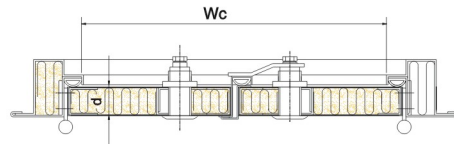
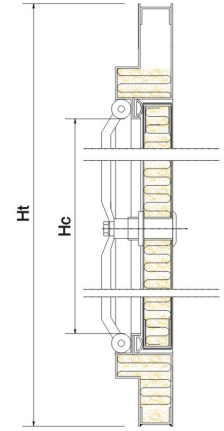


# A ACCESS DOOR A 舱室检修门

TYPE  
型号 SJXMB15

## Technical Specification 技术要求

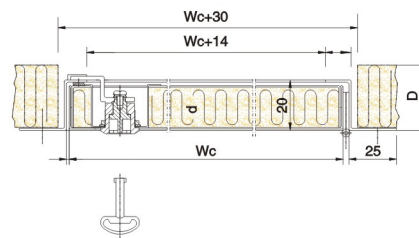
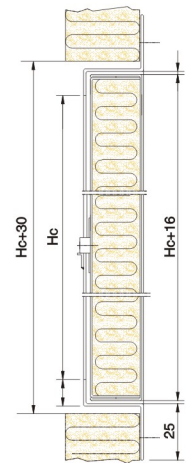
门扇 0.7mm 贴 PVC 膜的镀锌 钢板 / 1.2mm 烤漆钢板	DOOR LEAF 0.7mmPVC-laminated Galvanized steel sheet or 1.2mm steel sheet (baked paint).
门框 复合防火岩棉板	DOOR FRAME Compound bulkhead panel
门扇尺寸 Hc x wc x d 2100mmx1400mmx25mm	THICKNESS OF DOOR LEAF Hcmax x Wcmax x d 2100mm x 1400mm x 25mm



TYPE  
型号 TCB15

## Technical Specification 技术要求

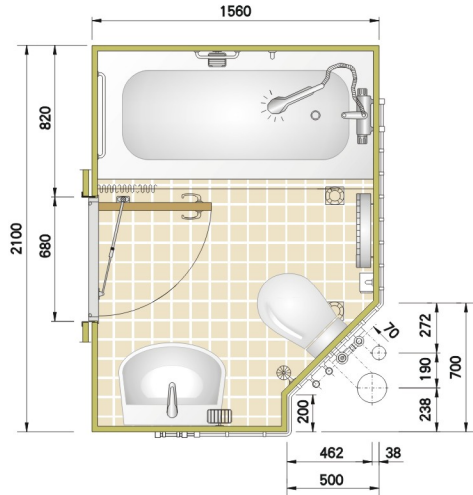
门扇 0.7mm 贴 PVC 膜的镀锌 钢板	DOOR LEAF 0.7mmPVC-laminated Galvanized steel sheet
门框 1.5mm 钢板烤漆	DOOR FRAME 1.5mm steel sheet baked paint
门扇尺寸 Hc x wc x d 800mm x 500mm x 20mm	THICKNESS OF DOOR LEAF Hcmax x Wcmax x d 800mm x 500mm x 20mm



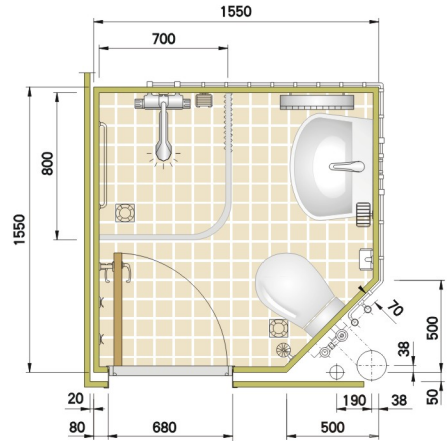
Example of standard types

样例

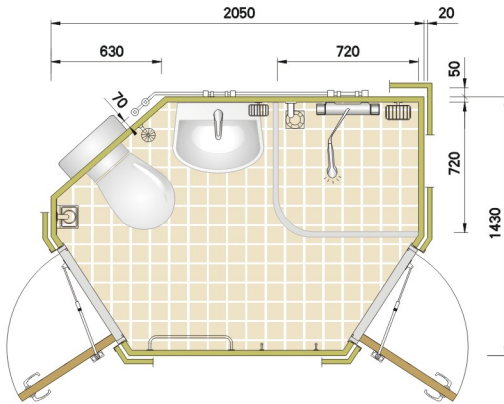
TYPE-A



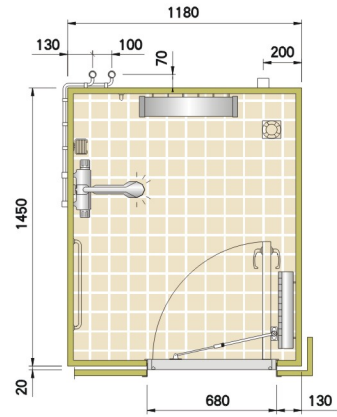
TYPE-B



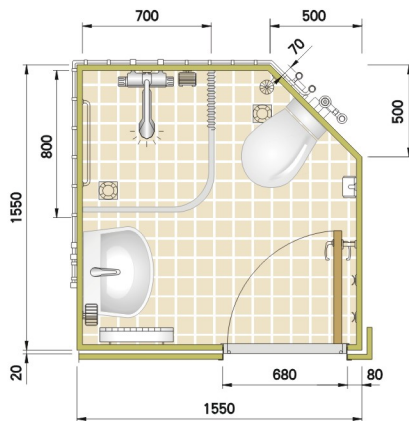
TYPE-C



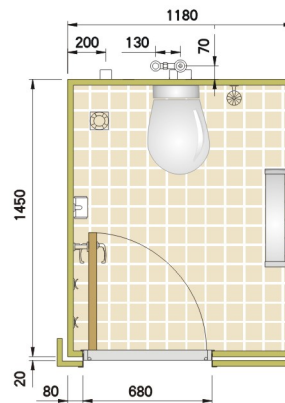
TYPE-D



TYPE-E



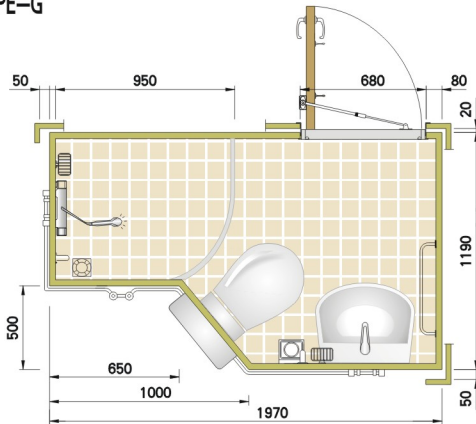
TYPE-F



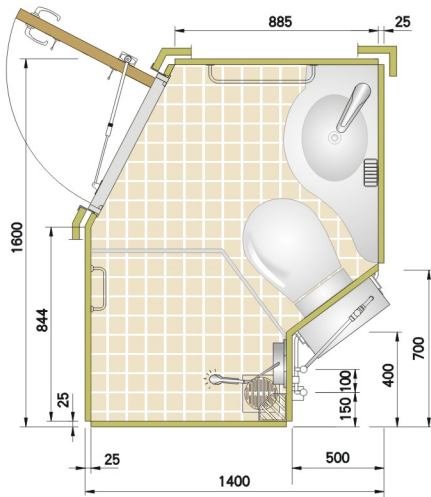
Example of standard types

样例

TYPE-G



TYPE-H



SPECIFICATION OF BATHROOM UNIT

- Floor  
Epoxy quartz sand coating or ceramic tile finished on steel base plate.
- Wall and Ceiling  
PVC film finished on galv. steel sheet, backed by a mineral wool insulation.
- Door  
Door blade: PVC film or baked enamel paint finished on steel sheet.
- All connection of pipes and electric equipments are fitted in service area.
- All wet units could be fabricated individual types according to customer's specification and requirement.
- TYPE-H bathroom unit weight 300 ~ 400kg  
Other TYPE weight 600 ~ 700kg
- Standard accessories
 

1) Toilet bowl	6) Paper holder
2) Wash basin with single handle lavatory faucet	7) Grab rail
3) Mixing shower set	8) Ashtray
4) Toilet cabinet with mirror	9) Soap dish
5) Shower curtain	10) Towel bar
	11) Lighting with shaver socket
	12) Exhaust fan

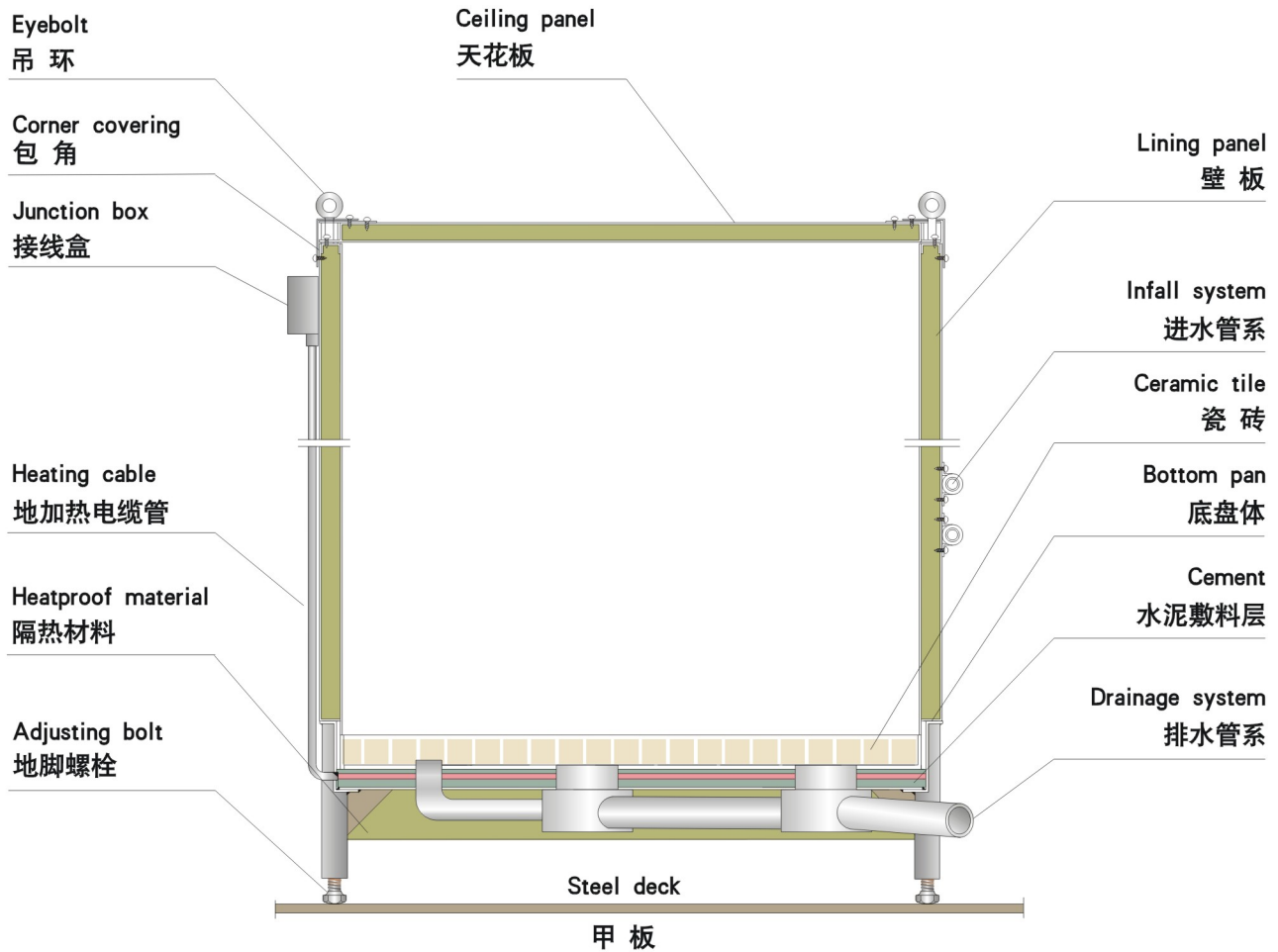
卫生单元系统说明

- 地板  
在钢制的底盘上铺设 环氧石英沙敷料或瓷砖
- 墙面和天花板  
PVC 贴塑钢板夹岩棉构成
- 门  
门扇: PVC 贴塑钢板或烤漆钢板
- 所有的管道连接和电器设备安装在维修区
- 所有的卫生单元系统可根据客户的规格和要求制作
- TYPE-H 型卫生单元重量为 300 ~ 400kg
- 其它型号卫生单元重量为 600 ~ 700kg
- 标准附件
 

1) 座便器	6) 手纸盒
2) 带单柄混水龙头的洗面盆	7) 防浪扶手
3) 淋浴器	8) 烟灰缸
4) 镜面箱	9) 肥皂盒
5) 浴帘	10) 毛巾架
	11) 镜前灯 (带剃须刀插座)
	12) 抽风头

Whole structure

整体构造



Brief introduction of structure

Constructional whole wet unit could be divided into three sorts: common type, light type and floor heater type. It can be characterized with prefabricated, light weight, fastness, layout reasonable and changeable. External size of wet unit could be changed widely so that to meet all circumstance.

结构特点简介

整装式卫生单元按结构可分为普型、轻型和电加热型。具有可预制、重量轻、结构牢固、布结构牢固、布局合理可调、外型尺寸可变性强等特点，能满足各类船舶舱室及海洋、陆用工程的需要。

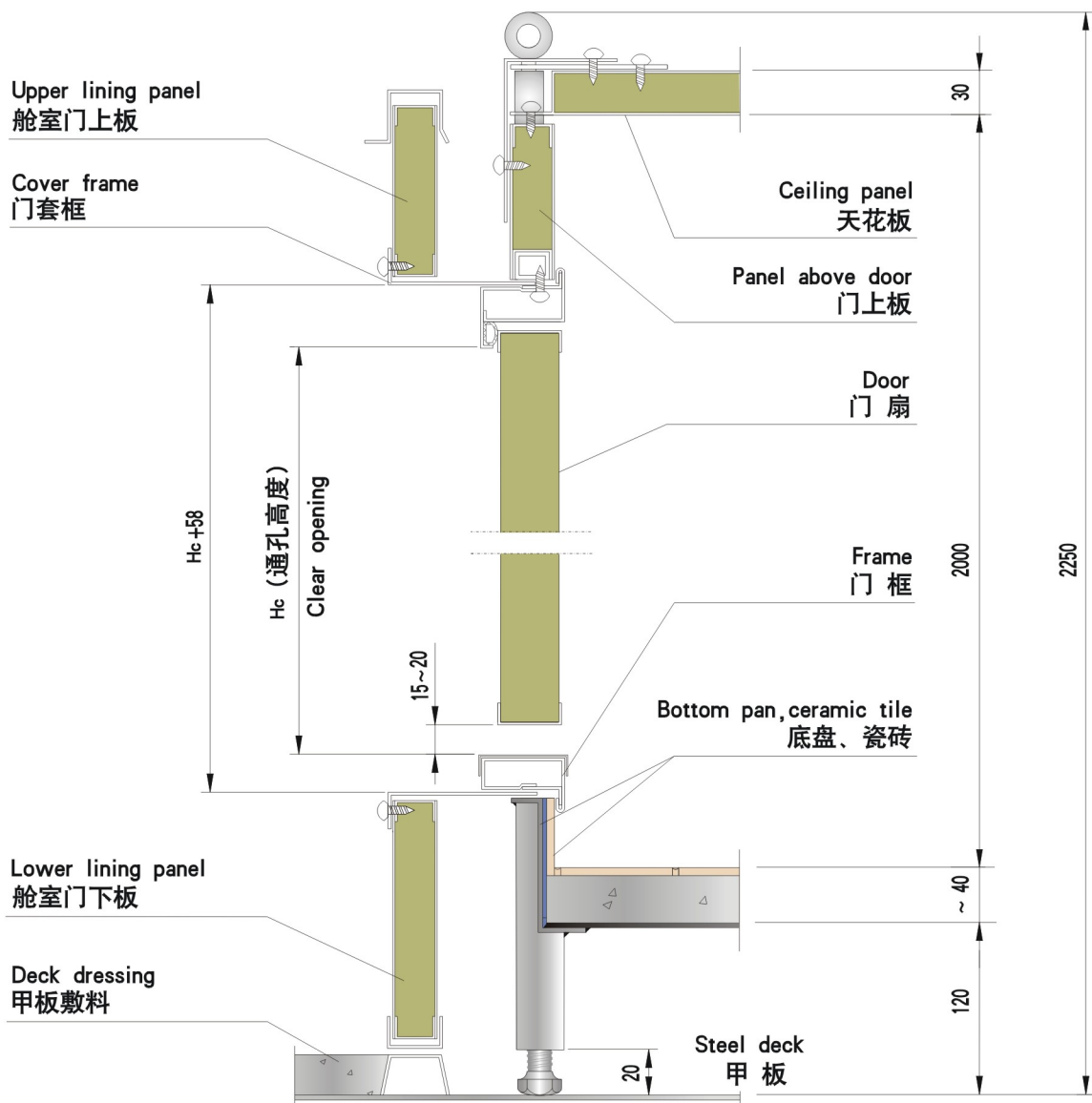
TYPICAL STANDARD DETAILS

典型规格详述

Scupper 地漏	stainless steel 不锈钢
Grey water pipe 灰水管	out dia $\phi$ 60 mm 外径 $\phi$ 60 mm
Fresh water pipe 进水管	copper-pipe outer dia $\phi$ 14 mm 紫铜管 外径 $\phi$ 14 mm
Connection 管接头	B.S.P. 1/2"
Electrical cable 电缆线	Marine cable 3 $\times$ 1.5 mm 船用电缆 3 $\times$ 1.5 mm
Conduit pipe 连接管	Rubber tube with cloth interlayer 胶布软管 (内径 $\phi$ 60, $\phi$ 110)
Door hinge 门铰链	Stainless steel flag hinge 5" 不锈钢旗铰 5"

Door details

门节点

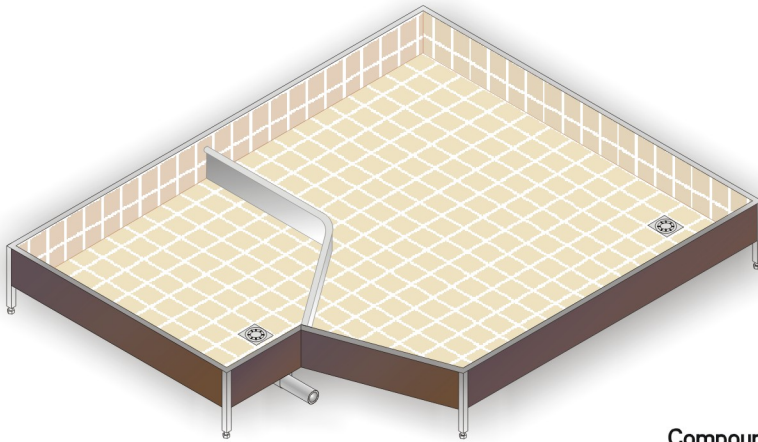


Floor configuration

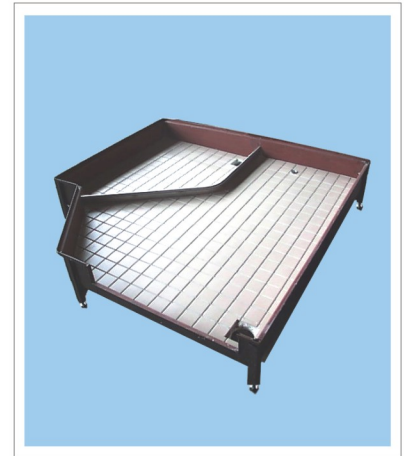
底盘结构

Stainless steel separate shower area from others. Floor pan with slope.

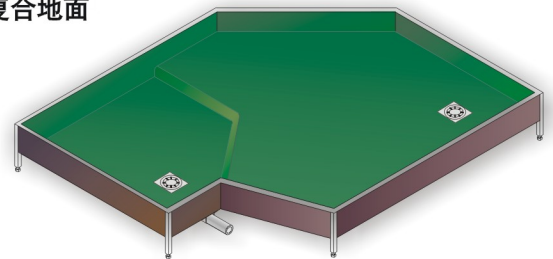
用不锈钢拦水板隔开淋浴区，地面向地漏方向稍倾斜。



Before paving the washboard  
裙边敷设前

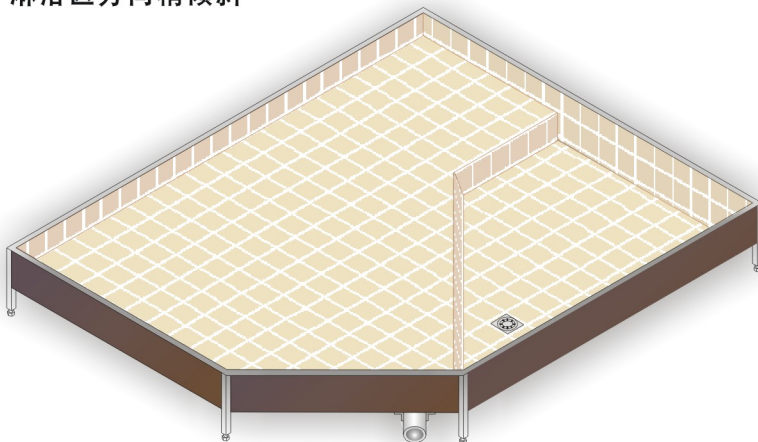


Compound floor  
复合地面



Shower area is lower. Floor pan with slope.

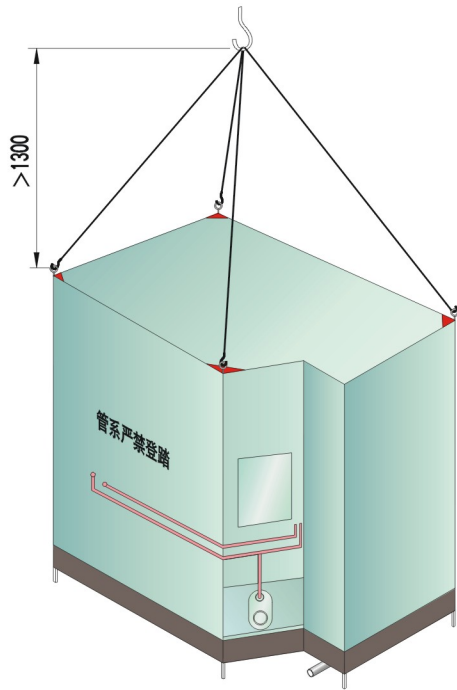
淋浴区下沉，地面向淋浴区方向稍倾斜



Washboard of quartz sand  
石英沙裙边



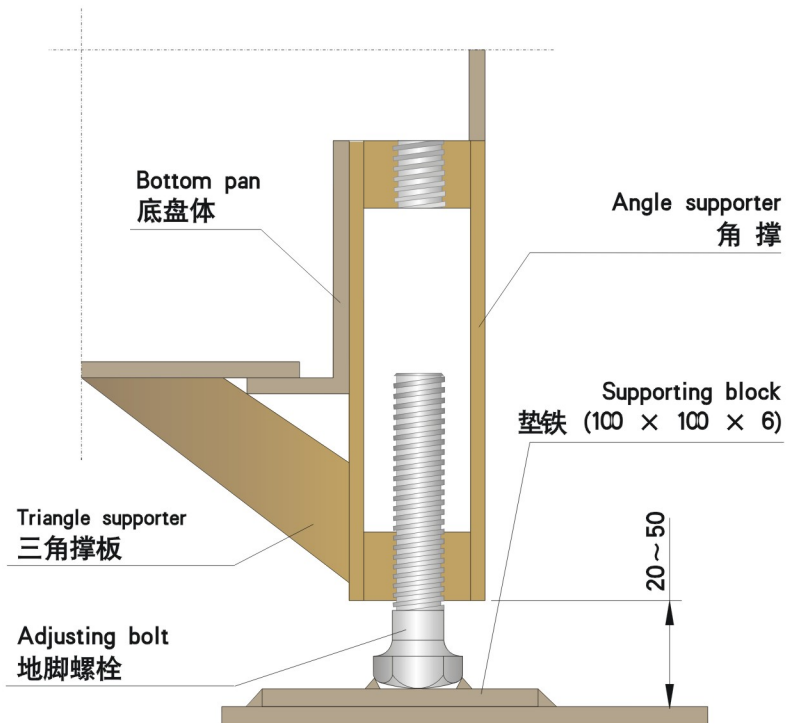
Hoisting 吊装



Lifting convenience and safety. Four eyebolts on top is used for hoisting by crane. All wet unit should be setted smoothly at setting position after hoisting evenly .

吊装方便，安全可靠。用钢丝绳挂钩钩住单元四角吊环，平衡起吊，至安装位置时平稳下落。

Corner supporter 脚支撑节点

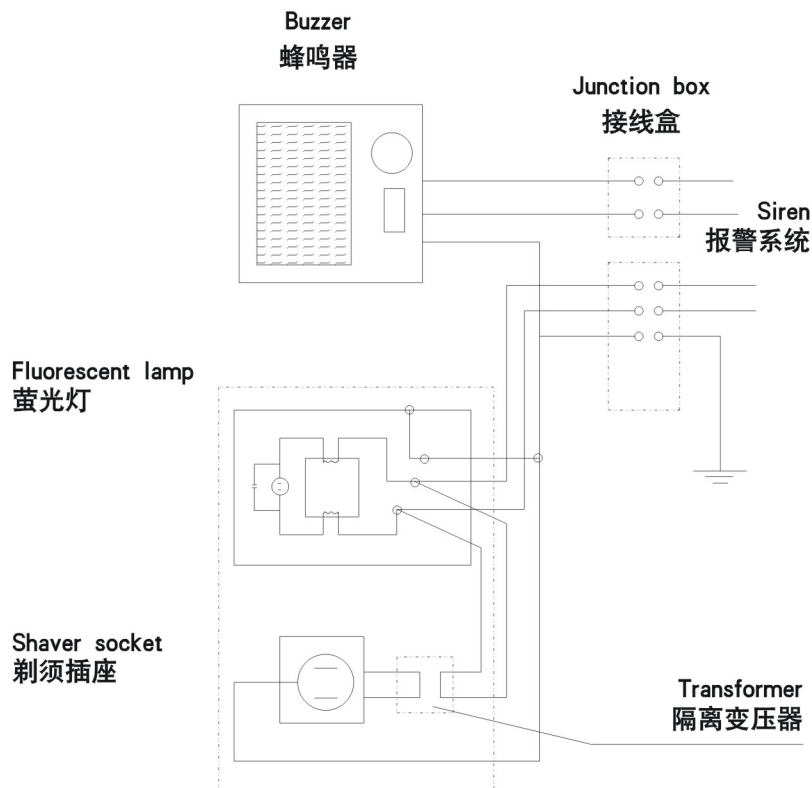


Adjusting convenience, whole structure concision, weld bolt to the deck after adjusting wet unit to proper place.

脚支撑结构简洁牢固，调节方便。调整底盘高低时，用扳手松紧地角螺栓至适当位置后，焊牢在甲板上即可。

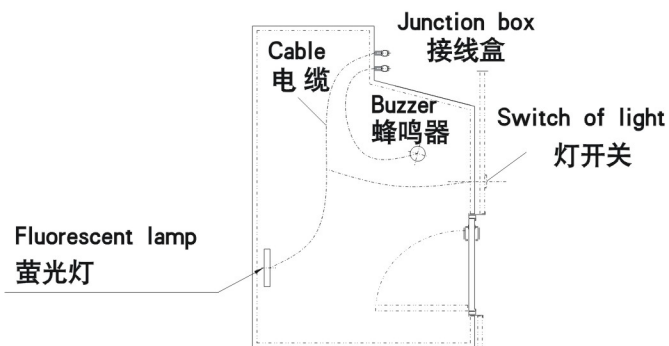
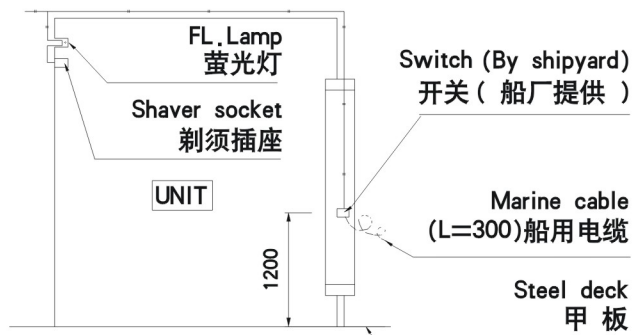


Circuit diagram 电路原理图



This electric circuit diagram is reference only, Electrical apparatus connect by parallel connection. Cables which are high grade are fixed on metal plate with fixer.

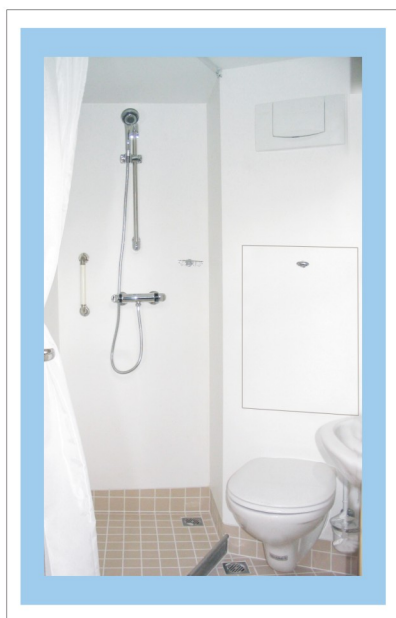
本电路图仅供参考，根据选用电器不同而作变动。各电器之间电路采用并联方式，采用优质绝缘电缆线连接，用线卡将电缆固定在金属板面上。



Overhaul 检修

Repair door in the wall panel of wet unit

检修门在单元壁板上



All connections of and electric circuit are centralized in repairing area .Intention of this designing is to make check and repair co-nvenience in the course of usage.

单元所有水路管系、电器线路接口都集中在拐角检修区，使用中维修、检修十分方便。

Repair door in the wall panel of corridor

检修门在走道上



Repair area

检修区



Sanitaryware and hardware 卫生洁具及小五金件



名称: 洗面盆  
Name: Wash basin



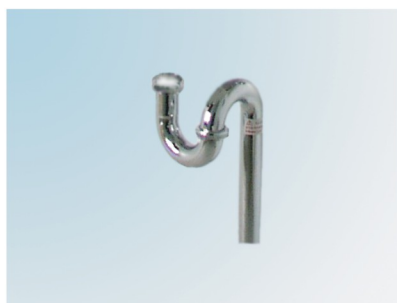
名称: 马桶(悬挂式)  
Name: Toilet bowl



名称: 马桶(落地式)  
Name: Water closet



名称: 单柄混水龙头  
Name: Wash basin mixer



名称: S存水弯  
Name: S-type pipe



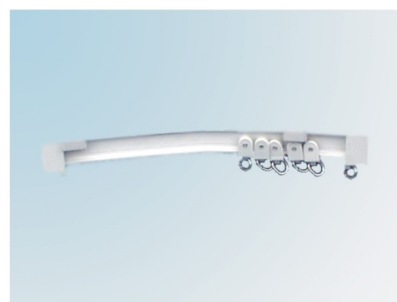
名称: 直角阀  
Name: Angle valve



名称: 水箱  
Name: Water box



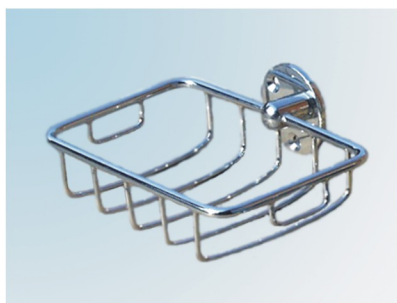
名称: 冲水开关  
Name: Tap



名称: 帘轨  
Name: Curtain orbit



名称: 肥皂盒  
Name: Soap holder



名称: 肥皂盒  
Name: Soap holder



名称: 肥皂盒  
Name: Soap holder

Sanitaryware and hardware 卫生洁具及小五金件



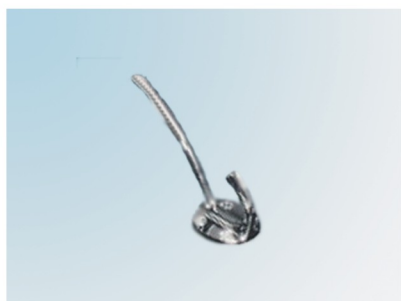
名称: 温控阀  
Name: Shower mixer with  
thermostatic



名称: 单柄阀  
Name: Bathtub mixer



名称: 花洒、拉杆及软管  
Name: Shower handle  
hose and holder



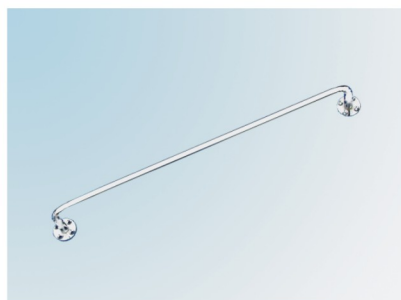
名称: 衣帽钩  
Name: Hat and coat hook



名称: 衣帽钩  
Name: Hat and coat hook



名称: 衣帽钩  
Name: Hat and coat hook



名称: 毛巾杆  
Name: Towel bar



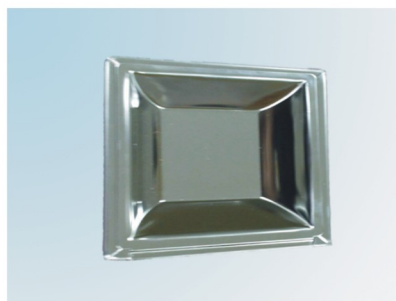
名称: 毛巾杆  
Name: Towel bar



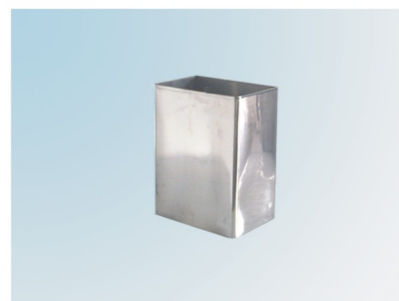
名称: 毛巾环  
Name: Towel ring



名称: 杯架  
Name: Tumbler holder



名称: 烟灰缸  
Name: Ashtray



名称: 废纸篓  
Name: Wastebasket

Sanitaryware and hardware 卫生洁具及小五金件



名称: 镜面箱  
Name: Mirror cabinet



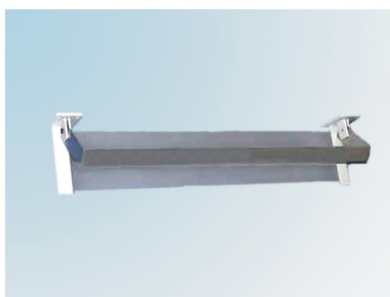
名称: 镜面箱  
Name: Mirror cabinet



名称: 角灯  
Name: Corner light



名称: 镜前灯  
Name: Light



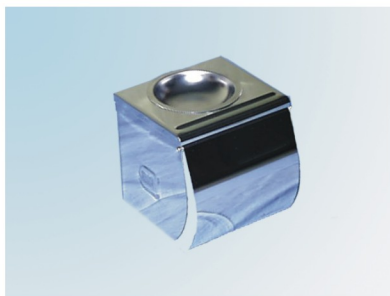
名称: 化妆品托架  
Name: Toiletry rack



名称: 化妆品托架  
Name: Toiletry rack



名称: 手纸架  
Name: Paper holder



名称: 手纸盒(带烟灰缸)  
Name: Paper box with ashtray



名称: 备用手纸架  
Name: Backup holder



名称: 晾衣器  
Name: Cloths line



名称: 马桶刷及杯  
Name: Toilet brush & holder



名称: 防浪扶手  
Name: Grab rail

总包工程公司是中国船舶工业集团公司江西朝阳机械有限公司的下属单位，是专业从事舰船、海上平台耐火舱室和陆用净化工程内装总包业务的唯一一家国有企业。

现拥有10支近300人的专业施工安装队伍，主要分布在长三角、珠三角和渤海湾等沿海、沿江地区，承揽过长江内河豪华游轮、集装箱船、油船、散货船、客滚船及教学船等各类船舶的总包安装业务，拥有成熟的船舶内装总包管理经验。

Total package engineering company of JiangXi ChaoYang Machinery Co.LTD. is under China State Shipbuilding Corporation. We are a professional engaged in installation project, such as the ship, offshore platform, land type purification workshop , compositrockwool panel system cabin and turnkey project. And we are only a state-owned enterprise.

We have 10 professional installation teams, nearly 300 people, mainly distributed in theYangtze river delta, the pearl river delta and bohai bay coast. We have undertaken over theluxury cruise of Yangtze river,container ship, oil tanker, bulk carrier, roll-on ship and teaching-training vessel and other kinds of ship. We have mature management experiencefor turnkey project.



## EPS FOR TYPICAL VESSEL

### 承包的各类船型



渔政船 Fishery administration vessel



海事船 Maritime vessel



海警船 China coast guard vessel



- ① 邮轮 passenger liner
- ② 散货轮 bulk carrier
- ③ 集装箱船 container vessel

海上钻井平台 Offshore drilling platform



**CASES**  
部分案例



船员餐厅一角 Crew dining room

驾驶室一角 Wheelhouse



驾驶室一角 Wheelhouse



办公室 Office



会议室 Assembly room

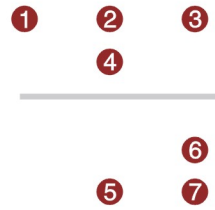


官员餐厅 Officer dining room



公共区域 Public area





- ① 船长卧室 Captain bed room
- ② 船长办公室A Captain office A
- ③ 船长办公室B Captain office B
- ④ 船长办公室C Captain office C

- ⑤ 多功能会议厅 Multifunction meeting room
- ⑥ 休憩室 Lounge
- ⑦ 健身房 Gym





**TURN-KEY CAPABILITY**  
总包能力

**技术支撑**

**Technical support**

开发与创新

Development & innovation

高深资历的工程师和技术人员

Highly qualified engineers and technicians

知识产权/专利

Intellectual property / patents

成本效益的解决方案

Cost effective solution

**施工管理**

**Construction management**

专业的施工队伍

Professional construction team

成熟的管理经验

Mature management experience

严格的管控制度

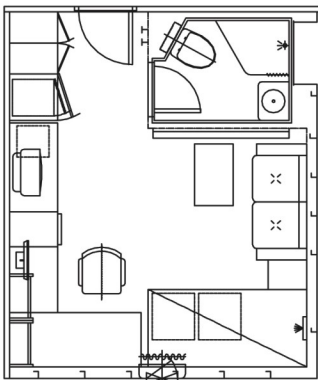
Strict control system

完善的售后服务

Perfect after-sales service

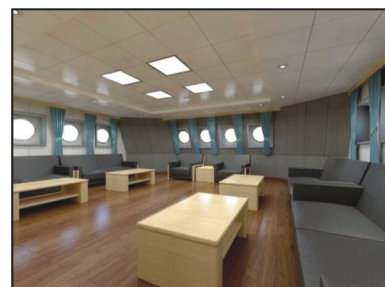
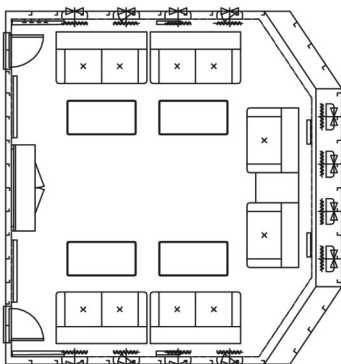
**船长室设计方案**

Captain room design scheme



**会议室设计方案**

Conference room design scheme





**PART OF CLIENTS**  
服务的部分客户





地址：江西九江彭泽县龙城大道993号  
(993# Longcheng Avenue pengze county Jiujiang City Jiangxi Province PRC.)

网址：<http://cymp.cssc.net.cn>

邮箱：[jxcymp@126.com](mailto:jxcymp@126.com)

电话：0792-5663850

传真：0792-5663807